

The Spare Tire

Palmetto A's of South Carolina

PO Box 8717

Columbia, South Carolina 29202

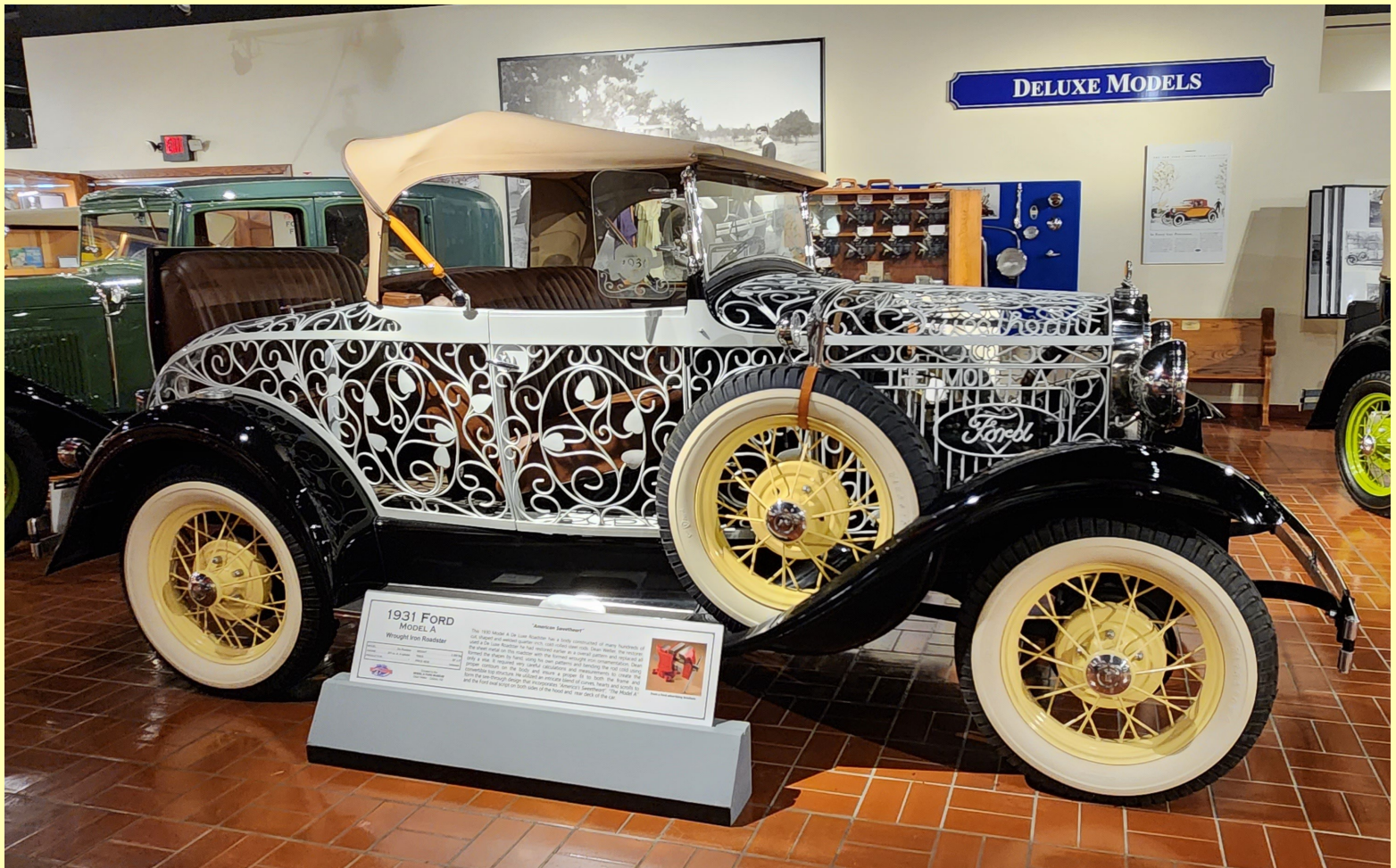
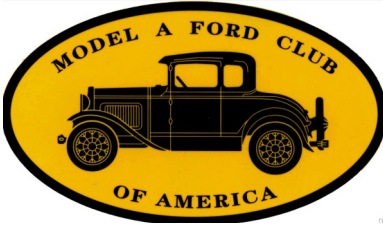
Model A Ford Club of America Chapter

Model A Restorers Club Region

Model A Ford Foundation, Inc.

Website: www.palmettoas.net

Facebook: [Palmetto A's of SC](https://www.facebook.com/PalmettoAsofSC)



This 1931 Model A Wrought Iron Roadster, "America's Sweetheart," is Dean Weller's tribute to the Model A Ford and Henry Ford and is on exhibit in the MAFFI Museum at the Gilmore Museum complex in Hickory Corners, Michigan



“A” Note from our President...

July found our club in Holly Hill to have lunch at Sweatman’s BBQ. Making the trip were 12 members in 5 Model A’s and 2 moderns. Thanks to Cheryl and Danny Austin for leading the tour and Calvin LeNeve for the pictures. The Beggs and Cockerill’s were sorry to miss the BBQ and fellowship; however, we did thoroughly enjoy representing our club and state on the MAFCA National Tour in Indiana and Michigan. I was able to fulfill one of my biggest bucket list items, to see the Gilmore Car Museum in Hickory Corners, Michigan, which of course includes the wonderful Model A Ford Museum. There were many more car museums and sites to see as we toured for the week. A huge thank you to Happy and John for helping Twila and I experienced such a wonderful time.

For August, our club will be heading to Saluda to visit the Sylvan Farm & Market where we’ll have lunch. We’ll meet at the Food Lion in Lexington (748 W. Main St.) We depart at 8 am. Please be fueled up and bring your walkie talkies. I look forward to seeing you all for another great day in our Model A’s.

I am sad to report that on July 19th, we lost Harold Dye, one of the founding members of the Palmetto A’s. Our thoughts and prayers go out to his family. Let’s keep those members on our prayer list in our thoughts. We hope to see them rejoin us soon! Remember as always, if your “A” is in the “repair or restore shop,” you can still be part of the fellowship in your “modern.” **So, let’s dust’um off, gas’em up, and let’s go “Model A’ing!”**

John Cockerill

Board of Directors

- President* - [John Cockerill](#) (803)446-3837
- Vice President* - [Happy Begg](#) (803)622-0048
- Secretary* - [Debbie Areheart](#) (803)960-6497
- Treasurer* - [Dick Fraser](#) (803)622-7582
- Newsletter Editor* - [Twila Cockerill](#) (803)446-5803
- Membership Director - [Cheryl Austin](#) (803)351-5687
- Past President - [Happy Begg](#) (803)622-0048
- National Director* - [Wayne and Debbie Areheart](#) (803)960-0927
- Members At Large - [Bruce Edge](#) (803)206-4207
- [Dan Ward](#) - (864)415-5496

*Denotes Officer of the Club

Committee Chairs

- Tour Director - [Cheryl and Danny Austin](#) (803)351-5687
- Technical Director [Wayne Areheart](#) (803)960-0927
- Librarian - [Davin Smith](#) (803)822-4141
- Sunshine - We need a volunteer!
- Palmetto A’s Annual Picnic - Committee
- Swap Meet - Committee
- Christmas Party - Committee
- Fundraising - [Dick Fraser](#)
- Community Outreach - [John Begg](#)
- Webmaster - [Happy Begg](#)
- Website: www.palmettoas.net

IN MEMORIAM
FOUNDING MEMBER HAROLD DYE
1925-2023



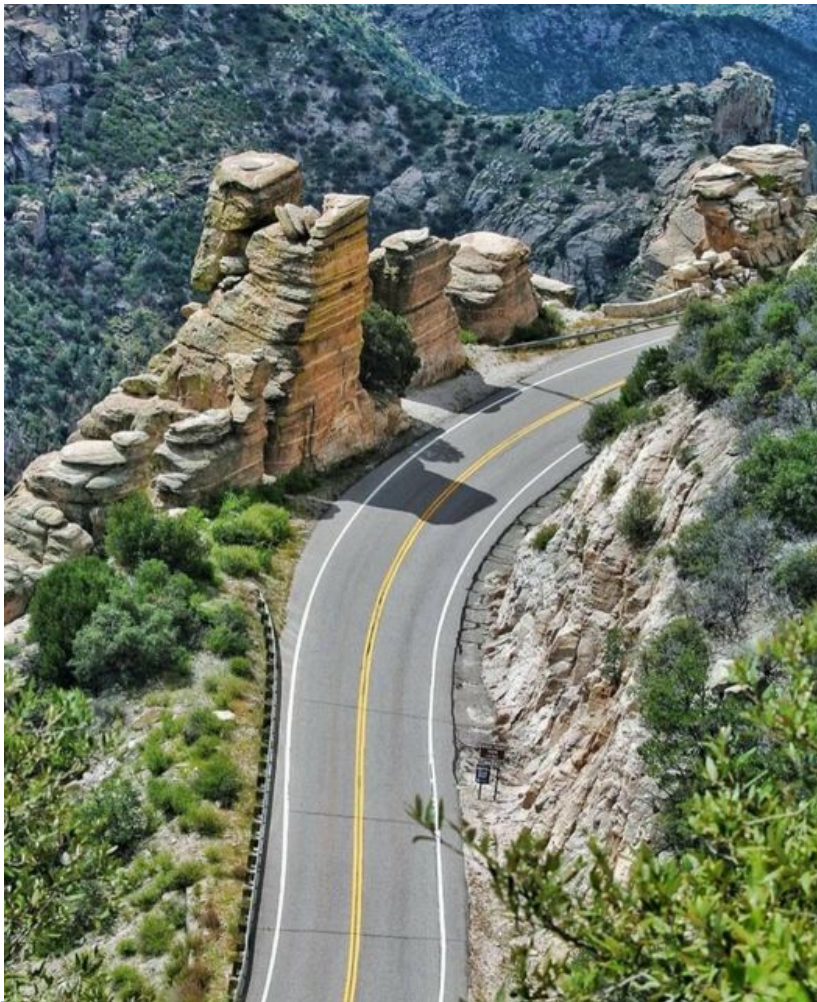
[See obituary here](#)



**Palmetto A’s Tour
August 19, 2023
Sylvan Farm & Market
171 Ridge Spring Hwy, Saluda**

We will depart from the Food Lion parking lot, 744B, W. Main St Lexington at 8am. We will have lunch at Sylvan Farm & Market.





Down the Road

Is there a destination to which you would like to drive your Model A? Is there a lunch spot to which you would like to drive your Model A? Call or email Cheryl and Danny Austin at 803-351-5687, daustino02@sc.rr.com. They are looking for your ideas and input!

Palmetto A's Schedule for 2023

August 19 - Sylvan Farm and Market, Saluda
See details on page 2.

September 16 - Lone Star BBQ, Santee

October 21 - Breakfast at Lizard's Thicket, Lexington, then tour to the Benjamin Mayes Historical Site in Greenwood

November 18 - McCleod Farms, McBee

December 9 - Christmas Party

PLEASE NOTE: DATES AND PLACES ARE SUBJECT TO CHANGE!

Other Events of Interest

August 19 - Shade Tree A's Swap Meet. 1818 August Hwy, Thomson, Ga

September 7 - 9 - [Charlotte Auto Fair](#)

September 15-16 - 12th Annual Model A Days at the MAFFI Museum in Hickory Corners MI

September 16 - International Model A Day

October 2 - 6 - [Hershey Swap Meet and Car Show](#)

October 14 - Warren Reynold's (Old 96) Annual Yard Sale. 120 Stoker Rd, Greenwood. Info: 864-980-7937, 864-980-0708 or swreynolds@centurylink.net

November 30 - Dec 2 - MAFCA National Awards Banquet in Santa Maria, CA



Birthdays

Ann Lyons - 3rd

Sherry Mack - 3rd

Kay Austin - 22nd

Mackinzie Takach - 22nd

Ruth Harper - 23rd

Joy Luce - 31st

MAFCA NATIONAL AWARDS BANQUET
NOVEMBER 30 - DECEMBER 1-2
See Ya! in Santa Maria!





Palmetto A's July 15th tour to Sweatman's BBQ
Thanks to Calvin LeNeve for the photos

The Grabber

by Tom Endy

Most modern cars today have a grabber handle located near the front passenger seat. The purpose is to assist the passenger in entering and leaving the vehicle. It also gives them something to hang onto when going around corners.

My friend and fellow club member Bryan Thompson, at the urging of his wife Wendy, has incorporated such a device in his 1931 Model A pick up.

The handle itself has been fabricated from the finest hard wood. The bracket attaches to existing bolts located under the right side of the dash rail.



Only the finest hard wood was used



The grabber is attached using existing bolt holes

Santa Anita A's Member, Tom Endy; Editor of the Victoria Association Newsletter (The Bustle) for the past 20 years, has created the 20+ years of the work. Some of the articles and documents have been featured in the MAFCA Restorer Magazine, other club's websites, and some are not published anywhere but here: santaanitaas.org/tom-endys-tech-articles/. Enjoy, utilize, and learn!

Treasurer's Report, July, 2023

We continue to maintain a balance in line with the club budget as set and approved by the Board of Directors. All bills and receipts are processed promptly. The checkbook is balanced monthly with no discrepancies. The club account balance is reported at each General Membership meeting.

Dick Fraser, Treasurer

Sunshine Report

Please keep the following folks in your thoughts and prayers: John Cockerill, Mack & Mary Day, Wes Porterfield and Pat Robbs, and the family of Harold Dye.

Remember: call, write or send a card to someone who needs encouragement. We are "FAMILY" and it helps to be thought of and prayed about.

If you have any Sunshine concerns, please call or email the newsletter editor to add the name to our Sunshine Report.

Snappy Jumper Dress

By Mary Carlson



We all know that the women of the Model A era mostly wore dresses or a variation of a skirt and blouse or skirt and sweater. But, we know that they also had “jumpers.”

According to the March 1931 issue of *Needlecraft* magazine, we see that a pattern was available for the home sewer to make a jumper dress. The magazine suggested that this could be made of woolen, silk or cotton fabrics. It noted that this jumper was appropriate for the youthful figure, as it was designed for ages 14 to 20 and for 36 to 40 inch bust measurements.

Courtesy of MAFCA

Cook's Corner.....

White Chocolate Cheesecake Bites

Makes 48 mini cheesecake bites.

Ingredients:

Crust

1½ c graham cracker crumbs

7 tbs butter, softened

Cheesecake

8 oz white chocolate chips

¼ c half and half

8 oz cream cheese, softened

¼ c sugar

2 large eggs, beaten

1 tsp vanilla

Fresh berries or fruit pie filling of your choice for garnish

Instructions:

Filling:

Add white chocolate chips to half and half in saucepan and heat over medium heat until white chocolate chips are melted. Set aside to cool.

In a separate mixing bowl combine cream cheese and sugar until smooth. Slowly mix in beaten eggs. Stir in vanilla. Add cooled white chocolate chip mixture and mix until well blended.

Crust:

Mix graham cracker crumbs and butter until well blended.

Preheat oven to 325°. Prepare a 48 cup mini cupcake tin with paper liners. Put a slightly rounded teaspoon of the crumb mixture in each cup and press to form bottom crust. Fill each cup with a rounded tablespoon of cheesecake mixture.

Bake for 20 minutes. Let cool to room temperature, then refrigerate.

Top with fresh berries or pie filling when ready to serve.



Model A Ford Technical Questions

Paul Shinn has gathered a group to help answer your technical questions about Model A's. The group includes MAFCA's current tech director and several past tech directors. You can email your questions and concerns to: ModelATechQuestions@gmail.com

Who knows, you may even see your question answered in *The Restorer!*

NEED HELP WITH YOUR MODEL A?

IS YOUR PROBLEM SOMETHING THAT COULD BE ADDRESSED BY THE CLUB "TECH TEAM?" WAYNE AREHEART AND THE "TECH TEAM" ARE LOOKING FOR SMALL JOBS THAT WOULD PROVIDE A "LEARNING" TECH SITUATION FOR THE CLUB. FOR MORE INFORMATION, PLEASE CONTACT WAYNE at dareheart@sc.rr.com or JOHN COCKERILL AT johntwilac@yahoo.com.

Just a reminder!!

The club has a library of Model A Technical DVDs for your use. Contact John Cockerill at 803-446-3837 (cell) or at johntwilac@yahoo.com.

August MAFFI Minute

MAFFI MUSEUM EXPANSION

After several months of planning the word is finally out. The following information was posted on the MAFCA web page on July 15, 2023.

“The Model A Ford Foundation (MAFFI) museum at the Gilmore Auto Museum complex in Hickory Corners Michigan is planning an expansion of the existing Model A museum. The museum opened in 2013 and is filled to the brim with Model A vehicles, exhibits, and interactive displays. More room is needed for additional vehicles and exhibits.”

Please visit the MAFCA web page to read the remainder of this article. Do not skip the link information.

This expansion will be paid in its entirety by donations. More on this will reach MAFCA and MARC membership in the coming months.

Happy motoring,
Mike DuBreuil
MAFFI Board of Trustees
Secretary

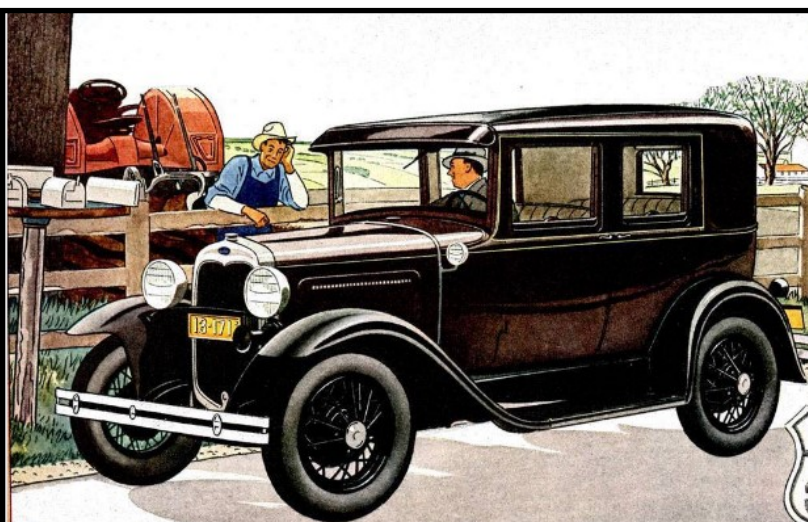
MAFFI MUSEUM EXPANSION



July 14 - The Model A Ford Foundation (MAFFI) museum at the Gilmore Auto Museum complex in Hickory Corners Michigan is planning an expansion of the existing Model A museum. The museum opened in 2013 and is filled to the brim with Model A vehicles, exhibits, and interactive displays. More room is needed for additional vehicles and exhibits.

MAFFI recently released a YouTube video showing what is there now and the plans to double the existing museum space in the next 2 years. To view that video, [Click Here.](#)

Courtesy of MAFCA



EATING IN THE FIFTIES

Pasta had not been invented. It was macaroni or spaghetti.
Curry was a surname.
A take-away was a mathematical problem.
Pizza? Sounds like a leaning tower somewhere.
Bananas and oranges only appeared at Christmas time.
All chips were plain.
Oil was for lubricating, fat was for cooking.
Tea was made in a teapot using tea leaves and never green.
Cubed sugar was regarded as posh.
Chickens didn't have fingers in those days.
None of us had ever heard of yogurt.
Healthy food consisted of anything edible.
Cooking outside was called camping.
Seaweed was not a recognized food.
'Kebab' was not even a word, never mind a food.
Sugar enjoyed a good press in those days, and was regarded as being white gold.
Prunes were medicinal.
Surprisingly muesli was readily available. It was called cattle feed.
Pineapples came in chunks in a tin; we had only ever seen a picture of a real one.
Water came out of the tap. If someone had suggested bottling it and charging more than gasoline for it, they would have become a laughing stock.
The one thing that we never ever had on/at our table in the fifties ... was *elbows, hats and cell phones.*

THE SATURDAY EVENING POST

IF YOU COULD SEE THEIR COMFORT
(as you see their style)

you would turn to look at every wearer of ARCH PRESERVER SHOES

FOR Arch Preserver comfort is the perfect fit. More than freedom from discomfort ... it's foot vigor—energy—health—because ... The web construction prevents the strain that saps the strength. The medial support removes the cause of fatigue. The flat inner sole enables nerves, muscles and blood vessels to function freely ... *BY THE BY ... you can see the arch preserver on your ad.*

use the amazing comfort in Arch Preserver Shoes, but wear a pair and you'll feel it. ... \$70 to \$115 ... Send for a pair of revised styles and free booklet. Address Dept. S-110.

E. T. WRIGHT & CO., INC.
Booklet, Free.
MAFCA/MAFFI/MAFCA/MAFFI/MAFCA/MAFFI

Wright ARCH PRESERVER SHOE

The Spare Tire

**Due date for submissions
for the September 2023
issue is August 20th**



CLICK HERE FOR MAFFI APPLICATION

<https://www.maffi.org/WSContent/Download/membershipapp2022.pdf>



[CLICK HERE FOR MAFCA
MEMBERSHIP APPLICATION](#)



[CLICK HERE FOR MARC](#)

A World Magazine

A MAFCA Publication

Have you downloaded the most recent edition of A World Magazine? Click on the link, download the magazine and print! This is a great magazine with fun for all ages!

<http://www.mafca.com/downloads/Youth/A-World.pdf>

The Palmetto A's is a not for profit organization with chapter affiliations with MAFCA and MARC. The organization is dedicated to the preservation and the restoration of the Model A Ford automobile and supports membership in the national organizations dedicated to the same purpose. Palmetto A's is one of the oldest Model A Clubs in the nation, having been active for over 62 years. Monthly meetings are generally held the third Saturday of the month, time and location announced in **The Spare Tire**, the club's monthly newsletter. Palmetto A's membership dues are \$25 per year.

Members are encouraged to join the following national clubs:

Model A Ford Club of America.

Annual dues are \$50 and include a subscription to **The Restorer Magazine** from MAFCA, 250 South Cypress St., La Habra, CA 90631 and

Model 'A' Restorers Club

Annual dues are \$50 and include a subscription to the **Model 'A' News Magazine** from MARC, 6721 Merriman Road, Garden City, MI 48135

Benefits of National Club Memberships

Membership in MAFCA includes the following:

A one year subscription to The Restorer, our award- winning bi-monthly magazine including free classified ads.

The right to register and participate in all National and Regional MAFCA meets

Voting privileges in National elections of officers and by-laws revisions

Free classified advertising on the MAFCA web site and posting of photo of your car in the Photo Album section

Technical advice to help restore your Model A and keep it in top shape

National MARC Membership Includes:

Six issues each calendar year of our award- winning, international, bi-monthly Model 'A' News magazine.

Includes detailed technical and Era fashion articles, Model A historical articles, coverage of National Meets and Region News, classified ads, and vendor ads - a great source of information for parts and services.

From 64 to 72 pages each issue. Excellent quality coated paper with color, and black and white photography.





Pinestraw Brothers
Lexington, SC

Gary Areheart
803.606.9250

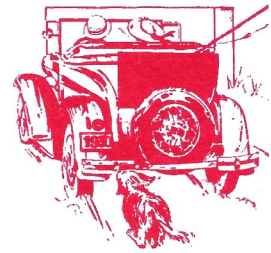
Wayne Areheart
803.960.0927

dareheart@sc.rr.com

"ONE MILE AHEAD"
Smith and Jones
ANTIQUE AUTO PARTS
SPECIALIZING IN MODEL A AND MODEL T PARTS
60 Wisconsin St. W Columbia, SC 29170

Quality Parts • Same Day Shipping
• Established 1972 •

Order Desk 1-800-422-1928
1-803-822-4141 • Fax 1-803-822-8477
All Major Credit Cards Accepted



Davin E. Smith

Orders: www.snjparts.com
Email: snjparts@gmail.com

Bentley's
Antique Auto Service, Inc.

We are a Full Service Shop, specializing in Model A Fords
We offer Award-Winning Paint and Bodywork
Expert Service and a Complete Machine Shop

678-407-1947 www.mymodela.com

Enjoy the Drive...



803-568-5499

The Henhouse Ministry

A Non-Profit Christian Organization

Open Wednesdays
9am-3pm

PO Box 203 1556 Whetstone Rd.
Hwy #3
Swansea, SC 29160

thehenhouseministry@gmail.com

The World's Largest Selection of 1909-31 Ford Parts

Snyder's
ANTIQUÉ AUTO PARTS

12925 Woodworth Rd. • New Springfield, OH 44443

Toll Free Ordering (888) 262-5712

or FAX (888) 262-5713

Order On-Line @ www.snydersantiqueauto.com



FREE Fully Illustrated CATALOG
\$10.00 outside the U.S., Canada, & Mexico



ARM BANDS ★ BACK PATCHES
CAR MAGNETS ★ BANNERS
TEES ★ POLOS
AND MUCH MORE!

CHRISTY SMITH

CHRISTY@CUSTOMEMB.NET

10525 GARNERS FERRY RD EASTOVER, SC

803-695-0403

COMPANYCASUALS.COM/CUSTOMEMB

Pardee's
Refrig. & Air Conditioning Inc.
* Since 1937 *

C. R. Pardee

1101 Miller Ave.
Columbia, SC 29203
(803) 779-2269

PO Box 3133
Columbia, SC 29230
Fax (803) 765-1558

TOM MACK 1-(888) TOM-MACK



P.O. Box 327 • PROSPERITY, SC 29127
TEL: (803) 364-3322 • FAX: (803) 364-2826
EMAIL: TMACK@TOMMACKCLASSICS.COM
WWW.TOMMACKCLASSICS.COM

Trading in Model A's since 1974.
Cell # 803-351-3695

ZAXBY'S



2320 AUGUSTA RD • WEST COLUMBIA, SC • (803) 739-1300
1759 S LAKE DR • LEXINGTON, SC • (803)996-6000
823 HWY 378 • LEXINGTON, SC • (803) 785 4000
649 COLUMBIA AVE • CHAPIN, SC • (803)575-8006

BRATTONS ANTIQUE AUTO PARTS



1606 BACK ACRE CIRCLE
MOUNT AIRY, MD 21771

Order # **800 255-1929**

Web: brattons.com

FREE 194 page illustrated MODEL A parts catalog
Catalog contains 3,200 Model A parts with full
descriptions and Picture of each part.

Supplying Quality by using over 90% U.S. parts
Serving the Model A restorer with parts since 1977

The Palmetto A's Model A Club, of MAFCA and MARC does not endorse or in any way approve or disapprove the use of any person or enterprise that advertises in *The Spare Tire* newsletter.