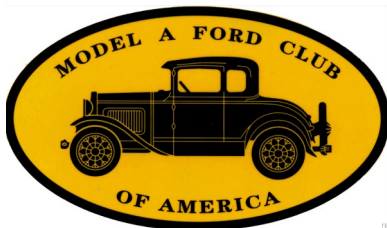


The Spare Tire

Palmetto A's of South Carolina



PO Box 8717
Columbia, South Carolina 29202
Model A Ford Club of America Chapter
Model A Restorers Club Region
Model A Ford Foundation, Inc.
Website: www.palmettoas.net
Facebook: [Palmetto A's of SC](https://www.facebook.com/PalmettoAsofSC)



"A" Note from the President...

Our July tour/outing was attended by 21 people in 12 Model A's. I was excited to see more of our members and A's starting to get back out on the road. We were especially glad to have one of the founding members, Mr. J.P. Temple join us for breakfast at Lizard's Thicket. After breakfast, we made a visit to the Lexington County Museum for an informative guided tour.

For our **August 21st** outing, we are planning for a **breakfast at 8:30 at Cracker Barrel on 1140 Kinley Rd. Irmo. (across from Prisma Health)** Then we travel a short distance to **tour the SC Law Enforcement Hall of Fame**. This again will be a morning tour hopefully before it gets too hot. Also, we hope to see folks that have joined our club this past year and have not been able to get to know us due to our limited outings this past year.

Also, this month we're having a **"Tech Session/Hot Dog Lunch" on Saturday, 7 August** at Wayne & Debbie Areheart's home, located at 530 Beckman Rd. Lexington. We'll be **starting at 8:30** discussing/showing some ways to adjust "steering wheel play". **I would like to have a headcount for those attending so we can plan for lunch. Please contact me by email or phone no later than Thursday, 5 August.**

It's not too early to start thinking about our club officer elections. Nominations will be presented in October and elections will be in November. If you are interested in filling a position please contact me or one of our other board members. Note: per our by-laws, all club elected officers and directors are required to be members of MAFCA and MARC.

Remember, if your "A" is the "repair or restore shop", you can still be a part of the fellowship in your "modern." **So let's dust'um off, gas'em up, and let's go "Model A'ing!"**

John Cockerill

Palmetto A's Model a Club Meet & Tour Saturday, August 21, 2021



We will meet at 8:30 for breakfast at the Cracker Barrel, 1140 Kenley Road in Irmo. After breakfast, we will take a short drive to take a guided tour of the South Carolina Law Enforcement Hall of Fame located at the SC Criminal Justice Academy, 5400 Broad River Road.



TECH MEETING SATURDAY, **August 7, 2021 8:30am**

Location: Wayne & Debbie Areheart's Shop
530 Beckman Road, Lexington

Topic: Steering Wheel Play

Lunch provided, headcount needed

Please contact John Cockerill, 803-446-3837 or johntwilac@yahoo.com, if you plan to attend



August Birthdays

Sherry Mack - 3rd

Mark Huff - 8th

Kay Austin - 22nd

Mackinzie Takach - 22nd

Ruth Harper - 23rd

Josh Thomas - 24th

Eddie Seastrunk - 26th

Joy Luce - 31st

Anniversaries

Leonard & Carrie Carroll - 5th

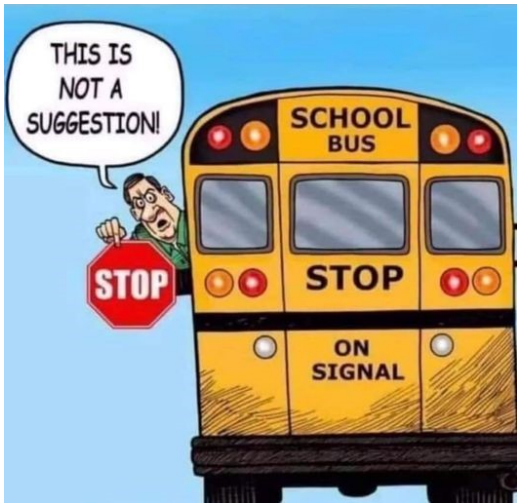
WANTED:
NEWSLETTER EDITOR
FOR THE SPARE TIRE

Must have computer skills

Current newsletter editor willing to teach “the ropes”

This is my seventh and final year as your newsletter editor. I have enjoyed working with everyone to publish *The Spare Tire* every month but it is time for someone new to take over. You all have until October to consider this position and I will answer any questions anyone has about being a newsletter editor. It can be fun and challenging at the same time. You get to work with a great bunch of people on the Palmetto Board of Directors and the club membership. And, like the sitcom Cheers, “It’s where everyone knows your name!” So, give it some serious consideration and see me if you have questions.

Twila



Board of Directors

- President* - [John Cockerill](#) (803)446-3837
- Vice President* - [Cheryl and Danny Austin](#) (803)351-5687
- Secretary* - [Sharon Booth](#) (803)422-9846
- Treasurer* - [Happy Begg](#) (803)622-0048
- Newsletter Editor* - [Twila Cockerill](#) (803)446-5803
- Membership Director - [Cheryl Austin](#) (803)351-5687
- Past President - [Happy Begg](#) (803)622-0048
- National Director* - [Wayne and Debbie Archeart](#) (803)960-0927
- Member At Large - [Wes Porterfield](#) (803)331-0918
- *Denotes Officer of the Club

Committee Chairs

- Tour Director - [Cheryl and Danny Austin](#) (803)351-5687
- Technical Director [Wayne Archeart](#) (803)960-0927
- Librarian - [Davin Smith](#) (803)822-4141
- Sunshine -
- Palmetto A’s Annual Picnic - Committee
- Swap Meet - Committee
- Christmas Party - Committee
- Fundraising - [Dick Fraser](#)
- Community Outreach - [John Begg](#)
- Webmaster - [Happy Begg](#)
- Website: www.palmettoas.net

Treasurer’s Report, July 2021

We continue to maintain a balance in line with the club budget as set and approved by the Board of Directors. All bills and receipts are processed promptly. The checkbook is balanced monthly with no discrepancies. The club account balance is reported at each General Membership meeting.

Happy Begg, Treasurer

Sunshine Report

Please keep the following folks in your thoughts and prayers: Judy Barnes, Twila Cockerill, Mack Day, Calvin LeNeve, Mike Lewter, Wes Porterfield and Wyman Toole.

Remember: call, write or send a card to someone who needs encouragement. We are “FAMILY” and it helps to be thought of and prayed about.

If you have any Sunshine concerns, please call or email the newsletter editor to add the name to our Sunshine Report.

17 July, 2021

Palmetto A's

Meet/Tour

Breakfast at

Lizard's Thicket

and

Tour of the

Lexington County

Museum



King Pin Geometry!

by Tom Endy

There are many articles written about how to install new king pins in a Model A Ford. However, unless you fully understand the geometry of the Model A front end, there may be an element of doubt concerning whether you did the job correctly. Since I did not understand the front-end geometry, I turned to Les Andrews for a proper explanation. Most of what is written here about the front-end geometry is a paraphrase of Les's explanation.

The weight of the body and frame in the front is resting on the center of the front spring where it is U-bolted to the frame. This weight is transferred out to each end of the front spring where the shackles attach it to the front axle. Therefore all the front-end weight is sitting on the front axle. This full weight is transferred to the king pins. To test the theory, slip a king pin into one end of the axle, without the spindle installed, and install the locking bolt, the king pin is now an integral part of the axle. It is easy to see that the weight of the axle will now be applied to the bottom side of the king pin flange. The king pin is locked in place in the axle and does not rotate.

Directly under the king pin flange a thrust bearing will be installed. The weight will now be on the thrust bearing and it will sit on top of the top surface of the spindle when it is installed. When the wheel is on the car and it is sitting on the ground the front-end weight is pressing down on the thrust bearing and against the top surface of the spindle. The spindle will rotate on the thrust bearing around the stationary king pin.

One would think all you had to do was put the parts together and you're good to go. Unfortunately reproduction parts and 75 plus years of wear enter into the equation. The thrust bearings available today (Timken part number T-83) are not as thick as were the originals (Ford part number A-3123), therefore shims are required for proper fit. The repo dust cover retainers supplied today are incorrectly made and will interfere with the installation. Wear to the mating surfaces of the axle and spindles are also a factor. All these variables must be taken into consideration when installing new king pins.

When installing new king pins the first effort should be to determine how many shims are needed under the thrust bearing. To do this install the king pin, the thrust bearing, and the spindle. Leave the dust seal off. Lock the king pin to the axle with the locking nut and bolt. Rotate the spindle and see how freely it rotates. Note any up and down movement. You will probably have up and down movement so add one or two shims. Check it again. Add shims until the spindle seems to be binding and not turning freely. Remove a shim if that is the case.

The shims will take up the free space that is between the bottom of the thrust bearing and the spindle. This free space is created by the lack of proper thickness of the thrust bearing and any wear that has occurred on the mating surfaces of the axle and the spindle.

Bratton's Antique Auto claims to stock a repo metal dust cover that is made to the original Ford drawing. That may be the case, but it still may not fit properly due to wear to the axle or spindle surfaces. Les Andrews says to leave them out completely. If you are a purest you may not want to do that.

My advice is to go ahead and try to install them. If they interfere, remove them and grind the lip down a little bit.

When you think you have the proper amount of shims installed and you think the dust cover is not interfering, there is a way to test it. With the car still sitting on jack stands, place a floor jack under the end of the spindle near the threaded end and run the jack up to put pressure on spindle. This will simulate the wheel being installed and the car sitting on the ground. With your fingers try to rotate the thrust bearing. You should not be able to move it. Do the same with the dust cover; you should be able to rotate it.

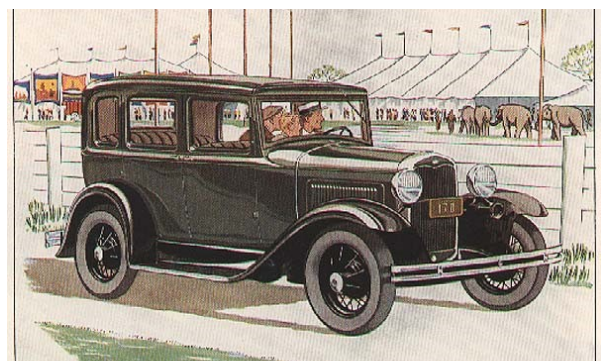
Correct installation of king pins, along with correct adjustment of the front wheel bearings is essential to safe proper steering. ☺

Santa Anita A's Member, Tom Endy; Editor of the Victoria Association Newsletter (The Bustle) for the past 20 years, has created the 20+ years of the work. Some of the articles and documents have been featured in the MAFCA Restorer Magazine, other club's websites, and some are not published anywhere but here: santaanitaas.org/tom-endys-tech-articles/ Enjoy, utilize, and learn!

Page 4

DID YOU KNOW?

The MAFCA website has a list of Tech videos. Check them out here: <https://www.mafca.com/videos.html#technical>







The Model A Ford Foundation

Model A Day 2021 is fast approaching-September 18th!

Every year in conjunction with Model A Day, MAFFI has a Swap Meet on Saturday and MAFFI has a booth with all the proceeds go to the foundation. If you are driving to the event this year, and your club would like to donate a Model A part for our booth, please contact Greg Fish (fish_49202@yahoo.com) and let him know. This year's Swap Meet is looking to be one of our biggest and best yet!

The old saying goes, "Many hands make light work" and nothing could be truer than at Model A Day. We could use a few volunteers to help at several areas throughout the day on Friday and Saturday. It could be something as simple as selling tickets for a seminar, working a shift at the front gate, helping park cars and so many more.

Any questions regarding the Swap Meet or for volunteers, contact:

Mark Maron (markmaron@gmail.com)

Stay tuned for next month when we will be able to announce the many seminars that will be available for you to attend.

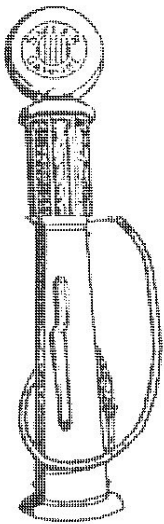
The Trustees are looking forward to meeting each and every one of you this year and are proud to showcase our beautiful museum with our First Responder's Display.

This "MAFFI Liaison Letter" was sent to you as your club's MAFFI Liaison. It is our hope that you will share it at your club's monthly meeting. If you are no longer the MAFFI Liaison for your club, please notify me at the email listed below with the name and email address of the new Liaison.

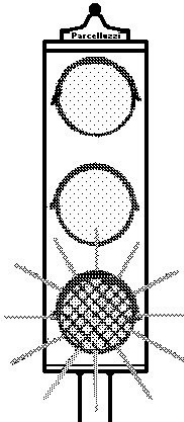
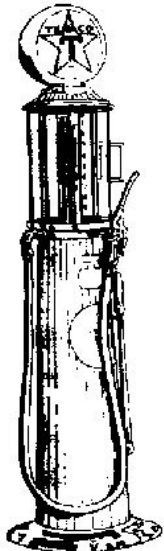
Thank you,

Marsha Quesnel, MAFFI Trustee

clubcontact@maffi.org



S. Pargeter



Bentley's

Antique Auto Service, Inc.

We are a Full Service Shop, specializing in Model A Fords

We offer Award-Winning Paint and Bodywork

Expert Service and a Complete Machine Shop

678-407-1947 www.mymodela.com

Enjoy the Drive...

"ONE MILE AHEAD"

Smith and Jones

ANTIQUE AUTO PARTS

SPECIALIZING IN MODEL A AND MODEL T PARTS

60 Wisconsin St, W Columbia, SC 29170

Quality Parts • Same Day Shipping
• Established 1972 •

Order Desk 1-800-422-1928
1-803-822-4141 • Fax 1-803-822-8477

All Major Credit Cards Accepted



Davin E. Smith

Orders: www.snjparts.com
Email: snjparts@gmail.com

1-888-ANTIQUE jctaylor.com



55 Years Experience
Agreed Value Coverage
Superior Claims Service

Protect Your Antique With J.C. Taylor

Photo courtesy collectorcarmarket.com © 2011 Copyright VWI International, Inc.

The Henhouse Ministry
A Non-Profit Christian Organization

1556 Whetstone Rd Hwy # 3
Swansea, SC 29160
803-568-5499

Wednesdays 9am-3pm



The World's Largest Selection of 1909-31 Ford Parts

Snyder's

ANTIQUE AUTO PARTS

12925 Woodworth Rd. • New Springfield, OH 44443

Toll Free Ordering (888) 262-5712
or FAX (888) 262-5713

Order On-Line @ www.snydersantiqueauto.com



FREE Fully Illustrated CATALOG
\$10.00 outside the U.S., Canada, & Mexico



"HAVE AN 'A' DAY"



Michael Butcher

1-888-879-6453

email: mike@mikes-afordable.com
www.mikes-afordable.com



Specialising in 1928 - 1931 Model A Ford Parts

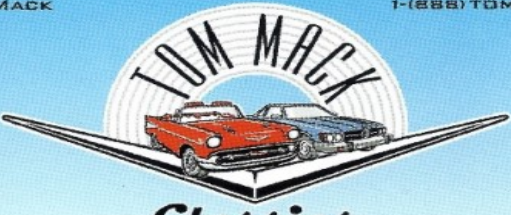
Pardee's
Refrig. & Air Conditioning Inc.
★ Since 1937 ★

C. R. Pardee

1101 Miller Ave.
Columbia, SC 29203
(803) 779-2269

PO Box 3133
Columbia, SC 29230
Fax (803) 765-1558

TOM MACK




Classics

P.O. BOX 327 • PROSPERITY, SC 29127
TEL: (803) 364-3322 • FAX: (803) 364-2826
EMAIL: TMACK@TOMMACKCLASSICS.COM
WWW.TOMMACKCLASSICS.COM

Trading in Model A's since 1974.
Cell # 803-351-3695

ZAXBY'S



2320 Augusta Rd. • West Columbia • 803.739.1300
1759 S. Lake Dr. • Lexington • 803.996.6000
823 Hwy. 378 • Lexington • 803.785.4000

© 2015 Zaxby's Franchising, Inc. "Zaxby's" is a registered trademark of Zaxby's Franchising, Inc.

BRATTONS ANTIQUE AUTO PARTS



1606 BACK ACRE CIRCLE
MOUNT AIRY, MD 21771
Order # **800 255-1929**
Web: brattons.com

FREE 194 page illustrated MODEL A parts catalog
Catalog contains 3,200 Model A parts with full
descriptions and Picture of each part.
Supplying Quality by using over 90% U.S. parts
Serving the Model A restorer with parts since 1977

The Palmetto A's Model A Club , of MAFCA and MARC does not endorse or in any way approve or disapprove the use of any person or enterprise that advertises in *The Spare Tire* newsletter.



Down the Road

Is there a destination to which you would like to drive your Model A? Is there a lunch spot to which you would like to drive your Model A? Call or email Cheryl and Danny Austin at 803-351-5687, daustino02@sc.rr.com. They are looking for your ideas and input!

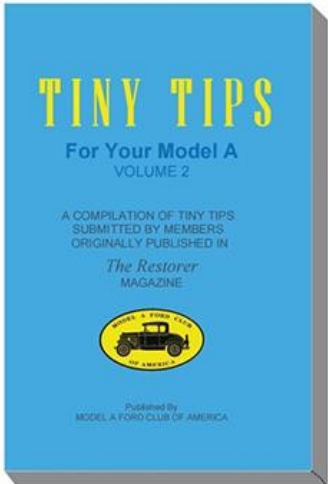
The Spare Tire

Due date for submissions
for the September 2021
issue is August 20th

New and Now Available

A Great Read Full of Fun Ideas

A Valuable Resource with Lots of Help



Order your copy of Tiny Tips Volume2 for only \$15.95 plus shipping and handling. Call 562-697-2712 for your copy today.

Palmetto A's Schedule for 2021

- August 21 - TBA
- September 11 - International Model A Day, Lone Star BBQ in Santee with the Low Country A's.
- October 16 - Picnic at St James Lutheran Church
- November 20 - TBA
- December 11 - Christmas Party

Other Events of Interest

- 2021
- September 9-11 [Charlotte AutoFair](#) Charlotte, NC
 - September 11 International Model A Day
 - September 17-18 11th Annual Model A Day at the Gilmore Car Museum
 - October 6-9 [Hershey Fall Swap Meet](#) Hershey, PA
 - December 2-5 MAFCA National Awards Banquet, Ft Worth, TX
- 2022
- April 1-3 MARC National Membership Meet Swan Lake, Plymouth, Indiana
 - June 5-11 MARC 2022 National Meet, Morgantown Pa
 - June 12-17 MAFCA National Convention Kerrville, TX

Annual Model A Day

Swap Meet

Fashion, Seminars, Food and Fun!

September 17th & 18th 2021 9-5pm

The Gilmore Car Museum
6865 W. Hickory Road
Hickory Corners, MI 49060

SAVE THE DATE

For more Info 269-615-3719 Jerry Morrissey
For Seminar Information Ken Ehrenhofer 630-697-3906
For Swap Reservations Mark Maron 847-302-7900

