

The Spare Tire

Palmetto A's of South Carolina

PO Box 8717

Columbia, South Carolina 29202

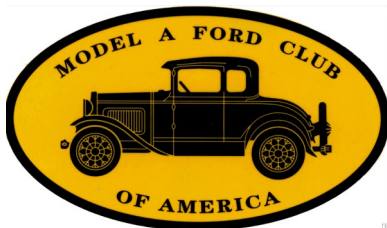
Model A Ford Club of America Chapter

Model A Restorers Club Region

Model A Ford Foundation, Inc.

Website: www.palmettoas.net

Facebook: [Palmetto A's of SC](https://www.facebook.com/PalmettoAsofSC)



"A" Note from the President...

Well winter has finally arrived in central South Carolina! The day after Christmas the thermometer started out at 24 degrees! Looking back at the year our club has just endured, even though some of our more popular events had to canceled, we did have a limited number of socially distanced and outside outings. We eagerly look forward to 2021, a new year with the hope of many positive changes not only for our club, but our state, our country and our world. As we anticipate, with hope, a new vaccine that will allow us to eventually return to some sort of normalcy, we have to approach the New Year's schedule with guarded caution. It has been decided by our elected board members that our clubs **regular January club meeting** will be cancelled. This again out of caution as the Covid has increased in numbers of infections and deaths. Having just been through the Christmas holiday season, and the strong anticipated surge in more cases **we will suspend our regular meetings** until the numbers come down to a socially reasonable level. We will continue to inform our members monthly as to when that might be.

The following will give us a chance to drive our Model A's while social distancing.

Due to the past months of 2020 causing many to "shelter in place" at home and not be able to get out,

the idea was brought forth for our club members to have a **"drive-by visit"** to those we have not seen in some time. This will allow us to get out in our A's and "visit" those that cannot, and let them know we're thinking of them. There are quite a few of our members that fall into this category. With that in mind we will not be able to "drive-by visit" all in one day. So, we will plan to do this type of event more than once in the coming year.

Our plan is to do our first "drive-by visit" on: Saturday January 2nd. So we don't have to plan a meal situation, we will meet at 1:00 PM (after you have had lunch) and follow a predetermined route ending that afternoon so everyone should have time to be home before dark and suppertime.

Meet at: 2453 Charleston Hwy. – (Bi-Lo on the left). This is next to where we use to meet in past years when heading south on Charleston Hwy. **Time: 1:00 PM**

Bring walkie-talkie

In case of rain this event will be postponed.

Hope to see you Saturday, so dust'em off, Mask'em up and let's carefully go Model A'ing!

John Cockerill



DUES NOTICE

Please respond in a
timely manner.

Deadline is 15 February, 2021!



January

Birthdays

Alinia Smith — 4th

Jack Reosti — 6th

Bobby Williamson — 7th

Tom Mack — 13th

Anniversary

Paul and Shirley Laingen — 14th

MAFFI Liaison Letter

December 2020

A Message from our President.

Closing out the year 2020, we realize many things we planned for our hobby could not take place. However, throughout this time, we also accomplished a number of good things including spending more time with our families. We also made some nice additions and improvements in our Museum. To list a few... we added an interactive chassis exhibit, the America’s Sweetheart Roadster and improved our interactive start display. We brought in three First Responder vehicles and will continue to display these vehicles throughout 2021. We added to our era fashion exhibits by acquiring new mannequins complete with era fashion attire. Special collections including Ford Dealer records, Jim Beam Model A decanters, header clocks and additional tools were added to our displays. Next year we will be adding several new donations to our Museum including a 1931 Woody Station Wagon. We also created videos, which will be rolled out on our website, showcasing our museum and several displays.

Due to the cancellation of Model A Day, we had a significant shortfall in income. However, many clubs and individuals have made contributions to help offset some of this loss. For this, we extend our great appreciation!

From all of the Trustees and myself, thank you for all of your support and many happy wishes for this holiday season.

Best Regards,
John Begg, President
Model A Ford Foundation

Board of Directors

- President* - [John Cockerill](#) (803)446-3837
 - Vice President* - [Cheryl and Danny Austin](#) (803)351-5687
 - Secretary* - [Sharon Booth](#) (803)422-9846
 - Treasurer* - [Happy Begg](#) (803)622-0048
 - Newsletter Editor* - [Twila Cockerill](#) (803)446-5803
 - Membership Director - [Cheryl Austin](#) (803)351-5687
 - Past President - [Happy Begg](#) (803)622-0048
 - National Director* - [Wayne and Debbie Areheart](#) (803)755-9395
 - Member At Large - [Wes Porterfield](#) (803)331-0918
- *Denotes Officer of the Club

Committee Chairs

- Tour Director - [Cheryl and Danny Austin](#) (803)351-5687
- Technical Director [Wayne Areheart](#) (803)755-9395
- Librarian - [Davin Smith](#) (803)822-4141
- Sunshine -
- Palmetto A’s Annual Picnic - Committee
- Swap Meet - Committee
- Christmas Party - Committee
- Fundraising - [Dick Fraser](#)
- Community Outreach - [John Begg](#)
- Webmaster - [Happy Begg](#)
- Website: www.palmettoas.net

Treasurer’s Report, December 2020

We continue to maintain a balance in line with the club budget as set and approved by the Board of Directors. All bills and receipts are processed promptly. The checkbook is balanced monthly with no discrepancies. The club account balance is reported at each General Membership meeting.

Happy Begg, Treasurer

Sunshine Report

Please keep the following folks in your thoughts and prayers: Mary Day, Sara Koon, Ann Porterfield and everyone touched by COVID-19 and all the caregivers.

Remember: call, write or send a card to someone who needs encouragement. We are “FAMILY” and it helps to be thought of and prayed about.

If you have any Sunshine concerns, please call or email the newsletter editor to add the name to our Sunshine Report.

2021 MAFCA BOARD

President



Bill Truesdell
California

Vice President



Happy Begg
South Carolina

Secretary



Ruth Janke
California

Treasurer



Dave Libbey
Massachusetts

Advertising



Dan Foulk
California

Technical



Tom Jeanes
California

Marketing/Membership



Doug Linden
Massachusetts

Chapter Coordinator



Robert Bullard
Texas

Publications/PR



Dean Potter
Alberta Canada

Office Manager



Sandra Aguirre
California

Jim's Tech Tip
by Jim Cannon

Ford originally used a fine mesh brass screen at the top of the glass fuel strainer bowl that's mounted to the Model A firewall. The bowl gives a place for water to settle into (water is heavier than gasoline) and a place for dirt and rust particles to collect.

The screen also keeps these particles from traveling down to the carburetor (where you have another screen!). With all these screens, I think Ford knew that gasoline supplies at the time were prone to contamination (more than today).



Many people have started to install a small pleated paper filter element in the glass bowl instead of the brass screen.

I'm not so sure it's needed; I think the brass screen is enough. The Model A has no fuel pump, it relies only on gravity feed, and I'm concerned about adding another restriction to the fuel flow.

But IF you use one of these paper filters, you need to know that the rust, dirt, etc. is trapped INSIDE the paper element, not on the outside of it like you'd think. Therefore, you can be collecting a lot of junk inside the filter, plugging up the filter element on the inside, and not even know it. One day, you lose all your power and the engine really acts like it is starving for fuel. You thought you would see the rust and dirt collect on the outside of the filter... but you don't. Surprise! (I hate surprises!)

So, if you are going to use these pleated paper filters, get into the habit of replacing them regularly, maybe once a year, since you can't see how dirty they are inside. And carry a spare filter and gasket with you in the car. It's a pretty easy thing to swap out in a parking lot. Kind of messy, but it can be done without tools. Use some disposable gloves and you won't smell like gas for the rest of the day.

That's all for now. Keep driving, help each other out, and Have a Model A Day! Jim

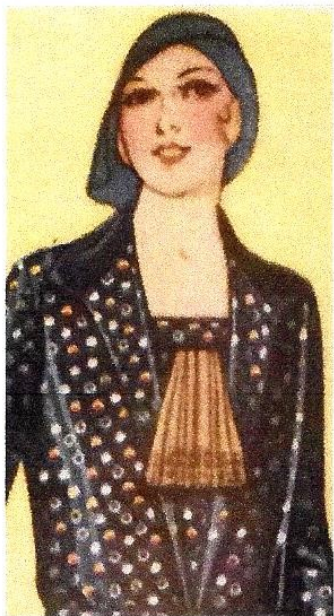


Courtesy of MAFCA

Jabots and Bertha Collars Add Era Flair to Modern Dresses

By Laurie Elliott, Santa Clara Valley Chapter

When looking at women's afternoon and evening wear of the Model A era, you'll notice all sorts of drapes, flounces, ruffles, ties and streamers that you generally don't see in modern clothing. This can be a bit perplexing when trying to recreate an era look. How do you achieve this without the work of sewing an entire garment? Try adding a jabot or bertha collar to your modern dress.



Do you have a fancy handkerchief just sitting in a drawer? Can you cut out and machine stitch a modern capelet pattern? Then you're on your way all ready.

Using examples of era fashions and tips included in this article, you might be able to short cut your way to a standout dress for your next Model A afternoon tea or banquet.

Read the full article on the MAFCA website at: http://www.mafca.com/ef_articles.html

Courtesy of MAFCA

Cook's Corner...

BANANA OATMEAL COOKIES

Like eating the top of a banana nut muffin!

- 1½ cups plain flour
- 1 cup white sugar
- ½ tsp baking soda
- 1 tsp salt
- 1 tsp cinnamon
- ¾ cup shortening
- 1 egg, beaten
- 1 cup mashed ripe banana
- 1¾ cup rolled oats
- 1 cup chopped nuts

Preheat oven to 400°.

Stir together in a large bowl first five ingredients.

Cut in shortening until almost no lumps remain.

Stir in egg and banana; mix well. Finally, stir in oats and nuts. Drop by teaspoonfuls 2" apart on ungreased cookie sheet.

Bake 12 to 15 minutes or until edges are lightly browned. Remove from pan immediately to cool on wire racks. Store in airtight container.

Makes three dozen cookies.

Bits of wisdom found in John Cockerill's grandmother's recipe box.

How to Preserve A Husband

Be careful in your selection. Do not choose too young. When selected, give your entire thoughts to preparation for domestic use. Some wives insist upon keeping them in a pickle, others are constantly getting them in hot water. This may make them sour, hard, and sometimes bitter; even poor varieties may be made sweet, tender and good, by garnishing them with patience, well sweetened with love and seasoned with kisses. Wrap them in a mantle of charity. Keep warm with a steady fire of domestic devotion and serve with peaches and cream. Thus prepared, they will keep for years.

Recipe For Happiness

Take: 2 Heaping Cups Patience
2 Heartful of Love
2 Handsful of Generosity
Dash of Laughter
1 Headful of Understanding

Sprinkle generously with Kindness.
Add plenty of faith and mix well.
Spread over a period of a lifetime and serve to everybody you meet.

A Dead Battery!

by Tom Endy

A common occurrence:

It's not uncommon for a Model A Ford to incur a dead battery, especially those that are still operating on six volts. Model A's are usually not driven daily and prolonged periods of sitting around tend to run the battery down. It is usually discovered when you climb in to go somewhere. You push on the starter button, and nothing.

Modern inconvenience:

What a lot of Model A hobbyist may not understand is that we the modern day owners may be contributing to this phenomenon. In a modern car when you switch off the ignition it shuts off all the electrical systems in the car, except maybe for the digital clock. In a Model A Ford when you switch off the ignition, at least the original pop out type, all you are switching off is the power that goes to the ignition points. That may have been fine in Henry's day, but stop and think about what a lot of us have done to the Model A Ford to improve on Henry's design.

The cutout:

The cutout used with the generator disconnects the battery from the generator whenever the engine is shut down. Without it the battery would discharge itself through the generator and you would have a dead battery. The cutout has a simple set of contacts that are either open or closed. The problem with the cutout is that the contacts can sometimes become welded shut over a period of time and not open, thus draining the battery when the car is parked. This is highly likely with the poor reproduction cutouts that are on the market. Modern day advancements in electronics provided the world with the diode. The diode is like a switch (sort of) in that it has a high resistance to current in one direction and a low resistance in the other. The low resistance path allows the generator to flow current to the battery to charge it. The high resistance path is supposed to not allow the battery to drain itself through the generator. An abundance of diode mod kits were made available at all the Model A hobby stores. The cutout contacts are replaced with the diode (hopefully in the right polarity) and welded contacts are a thing of the past. However, that high resistance direction is still allowing a small amount of current to flow out of the

battery through the generator to ground. The amount of current is minute, in the milliamps, but over time it draws the battery down. Turning the ignition key off does not shut the circuit off. Only removal of the fuse on top of the starter (if one is installed) will open the circuit and prevent the drain.

The alternator:

Another modern convenience seen on many Model A's today is the alternator. It is much more efficient than the old fashioned generator. You can buy them in either six volt or twelve volt. In fact you can even buy a six-volt positive ground alternator. However, the alternator has six diodes in it and the high resistance path will eventually drain the battery. This arrangement is also not switched off with the ignition key and it sits there and draws a small amount of current from the battery.

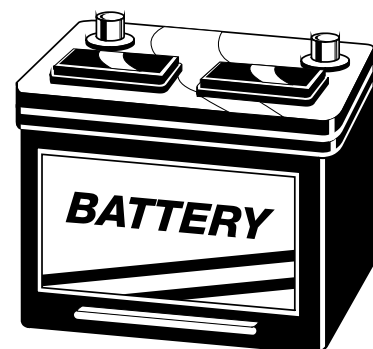
A failed alternator:

It is also possible to have an alternator that from all appearances is working fine. You start the car up and the ammeter shows it is charging. However, you can have one or more diodes that are partially shorted. With this situation the current drain from the battery is considerably more and in just a day or so the battery is dead.

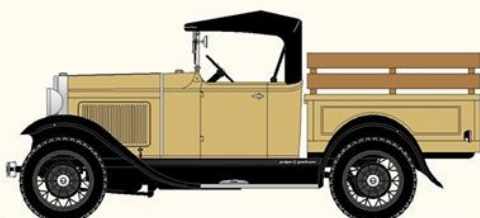
Good advice:

Whenever you park your car for the night or any other extended period of time. Pull the fuse out of the holder and stand it on its head in one end of the holder. This way everything except the starter switch is disconnected from the battery and there is no chance that a sneaky diode will ultimately cause you to have a dead battery. 😊

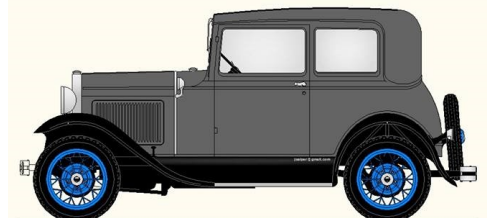
Tom Endy is a member of the Santa Anita A's and the International Model A Victoria Association



model "A" - FORD - de luxe roadster - 1930



model "A" - FORD - pick up roadster versión - 1931



model "A" FORD Victoria version - 1931

Editor's Note.....

Happy New Year? Well, we certainly hope so! We are truly done with 2020! And we won't see a lot of difference for the first quarter of 2021. Until this virus is under control, we will still be staying home unless we need to go out and then we will wear masks and socially distance.

That sure puts a kink in our usual Model A Club schedule. Back during the fall, we were fortunate enough have warm weather and to find places that provided outside dining. Winter weather has made touring with outside dining tenuous at best. Until our area COVID-19 case numbers go down, I think we are down for the count!

Unless you have adopted the stance of our northern Model A brethren and put your Model A to bed for the winter, you need to get it out and drive. Harken back to the time when everyone spiffed up their automobiles, piled their families in, and with no destination in mind, went for a Sunday drive. Let's brighten the lives of others and show off our A's. Smile and wave!

Twila



[CLICK HERE FOR MAFCA MEMBERSHIP APPLICATION](#)



[CLICK HERE FOR MARC MEMBERSHIP APPLICATION](#)

A World Magazine
A MAFCA Publication

Have you downloaded the most recent edition of A World Magazine? Click on the link, download the magazine and print! This is a great magazine with fun for all ages!

<http://www.mafca.com/downloads/Youth/A-World.pdf>

The Palmetto A's is a not for profit organization with chapter affiliations with MAFCA and MARC. The organization is dedicated to the preservation and the restoration of the Model A Ford automobile and supports membership in the national organizations dedicated to the same purpose. Palmetto A's is one of the oldest Model A Clubs in the nation, having been active for over 60 years. Monthly meetings are generally held the third Saturday of the month, time and location announced in *The Spare Tire*, the club's monthly newsletter. Palmetto A's membership dues are \$25 per year.

Members are encouraged to join the following national clubs:

Model A Ford Club of America.
Annual dues are \$50 and include a subscription to *The Restorer Magazine* from MAFCA, 250 South Cypress St., La Habra, CA 90631 and

Model 'A' Restorers Club
Annual dues are \$45 and include a subscription to the *Model 'A' News Magazine* from MARC, 6721 Merriman Road, Garden City, MI 48135

Benefits of National Club Memberships

Membership in MAFCA includes the following:

A one year subscription to The Restorer, our award- winning bi-monthly magazine including free classified ads.

The right to register and participate in all National and Regional MAFCA meets

Voting privileges in National elections of officers and by-laws revisions

Free classified advertising on the MAFCA web site and posting of photo of your car in the Photo Album section

Technical advice to help restore your Model A and keep it in top shape

National MARC Membership Includes:

Six issues each calendar year of our award- winning, international, bi-monthly Model 'A' News magazine.

Includes detailed technical and Era fashion articles, Model A historical articles, coverage of National Meets and Region News, classified ads, and vendor ads - a great source of information for parts and services.

From 64 to 72 pages each issue. Excellent quality coated paper with color, and black and white photography.

Bentley's

Antique Auto Service, Inc.

We are a Full Service Shop, specializing in Model A Fords

We offer Award-Winning Paint and Bodywork

Expert Service and a Complete Machine Shop

678-407-1947 www.mymodela.com

Enjoy the Drive...

"ONE MILE AHEAD"

Smith and Jones

ANTIQUE AUTO PARTS

SPECIALIZING IN MODEL A AND MODEL T PARTS

60 Wisconsin St, W Columbia, SC 29170

Quality Parts • Same Day Shipping
• Established 1972 •

Order Desk 1-800-422-1928
1-803-822-4141 • Fax 1-803-822-8477

All Major Credit Cards Accepted



Davin E. Smith

Orders: www.snjparts.com
Email: snjparts@gmail.com

1-888-ANTIQUE jctaylor.com



55 Years Experience
Agreed Value Coverage
Superior Claims Service



Protect Your Antique With J.C. Taylor

Photo courtesy collectorcarmarket.com © Copyright VWB International, Inc.

The Henhouse Ministry

A Non-Profit Christian Organization

1556 Whetstone Rd Hwy # 3
Swansea, SC 29160
803-568-5499

Wednesdays 9am-3pm



The World's Largest Selection of 1909-31 Ford Parts

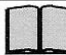
Snyder's

ANTIQUE AUTO PARTS

12925 Woodworth Rd. • New Springfield, OH 44443

Toll Free Ordering (888) 262-5712
or FAX (888) 262-5713

Order On-Line @ www.snydersantiqueauto.com



FREE Fully Illustrated CATALOG
\$10.00 outside the U.S., Canada, & Mexico



"HAVE AN 'A' DAY"



Michael Butcher

1-888-879-6453

email: mike@mikes-afordable.com
www.mikes-afordable.com



Specialising in 1928 - 1931 Model A Ford Parts

Pardee's

Refrig. & Air Conditioning Inc.

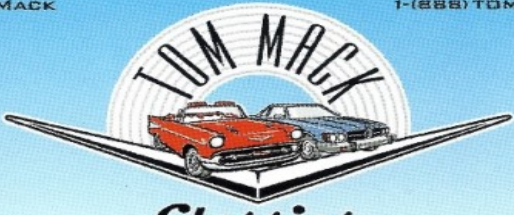
★ Since 1937 ★

C. R. Pardee

1101 Miller Ave.
Columbia, SC 29203
(803) 779-2269

PO Box 3133
Columbia, SC 29230
Fax (803) 765-1558

TOM MACK




Classics

P.O. BOX 327 • PROSPERITY, SC 29127
TEL: (803) 364-3322 • FAX: (803) 364-2826
EMAIL: TMACK@TOMMACKCLASSICS.COM
WWW.TOMMACKCLASSICS.COM

Trading in Model A's since 1974.
Cell # 803-351-3695

ZAXBY'S



2320 Augusta Rd. • West Columbia • 803.739.1300
1759 S. Lake Dr. • Lexington • 803.996.6000
823 Hwy. 378 • Lexington • 803.785.4000

© 2015 Zaxby's Franchising, Inc. "Zaxby's" is a registered trademark of Zaxby's Franchising, Inc.

BRATTONS ANTIQUE AUTO PARTS



1606 BACK ACRE CIRCLE
MOUNT AIRY, MD 21771
Order # **800 255-1929**
Web: brattons.com

FREE 194 page illustrated MODEL A parts catalog
Catalog contains 3,200 Model A parts with full
descriptions and Picture of each part.
Supplying Quality by using over 90% U.S. parts
Serving the Model A restorer with parts since 1977

The Palmetto A's Model A Club , of MAFCA and MARC does not endorse or in any way approve or disapprove the use of any person or enterprise that advertises in *The Spare Tire* newsletter.



Down the Road

Is there a destination to which you would like to drive your Model A? Is there a lunch spot to which you would like to drive your Model A? Call or email Cheryl and Danny Austin at 803-351-5687, daustino02@sc.rr.com. They are looking for your ideas and input!

Palmetto A's Schedule for 2021

January 2 - "Drive-by Tour" see front page for details

January 16 - Chicken Bog at the Austin's **HAS BEEN CANCELLED**

WE WILL CONTINUE TO UPDATE THE CALENDAR OF CLUB EVENTS ON A MONTH BY MONTH BASIS IN ACCORDANCE WITH SOCIALLY DISTANCING GUIDELINES.

Other Events of Interest

2021

April 8-11 [Charlotte AutoFair](#)

April 9-11 [MARC Membership Meet](#) 2021 in Bay City, MI

June 20-25 [MAFCA National Tour](#) in New Hampshire. Watch for details!



A WHITE MOUNTAIN ADVENTURE

MAFCA NATIONAL TOUR

JUNE 20-25, 2021

Follow the little gray Pickup to a Hub and Spoke Tour in North Conway, NH
Host Hotel Reservations now Open

Each day will bring you to unique destinations in and around the White Mountains and Lake Region
Tours will be over many miles of Model A friendly roads

TOURS

Museums Rt 153/109 - NH Boat Museum • Libby Museum • Wrights Museum of WW II
Castle in the Clouds

Kancamagus Highway • Mount Washington Auto Road • Waterfalls & Covered Bridges

ATTRACTIONS

Lake Winnepesaukee Scenic Cruises • Mount Washington Cog Railway
Conway Scenic Railroad • Clark's Trading Post • Storyland • Historic Wolfeboro

The Spare Tire

Due date for submissions
for the February 2021
issue is January 20th



To read the latest MAFCA Board Meeting Highlights, [click here](#).