

# The Spare Tire

## Palmetto A's of South Carolina

PO Box 8717

Columbia, South Carolina 29202

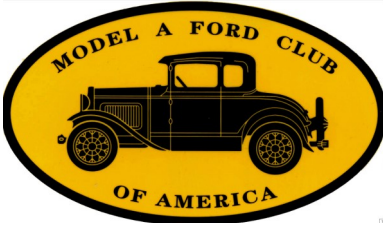
Model A Ford Club of America Chapter

Model A Restorers Club Region

Model A Ford Foundation, Inc.

Website: [www.palmettoas.net](http://www.palmettoas.net)

Facebook: [Palmetto A's of SC](https://www.facebook.com/PalmettoAsOfSC)



THE EVANSVILLE PRESS THURSDAY, DECEMBER 1, 1927.

### FIRST PICTURES OF NEW FORD AUTOMOBILE!

Here are the pictures the country has been waiting for—the official photos of the new Ford models, released by the Ford Motor company. Above is a view of the new Tudor sedan. A short inspection reveals radical differences between the new model and the old "lizzie." Note how the hood and radiator lines have been changed so that the Ford now resembles a "baby Lincoln." Note also the four-wheel brakes and bumpers which are standard equipment. See how the lines of the windows and doors have been changed to give an appearance of oneness.

The wheels in this model are not wire wheels; the spokes are in reality thin steel tubes, said to give added strength. Standard gear shift is a feature of the new model. The gas tank is under the cowl; see the cap in front of the windshield.

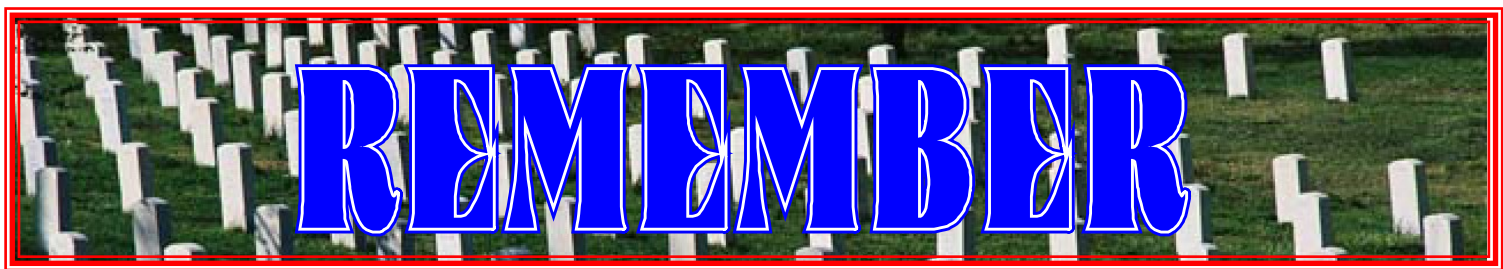
This picture of the wheel, dash board and instruments of the new Ford shows how radically the new model differs from the old. Note the horn and light control on the center of the wheel, with spark and gas control below; the hand gear shift lever, with foot throttle and starter on the floor; the gasoline gauge, dash light, ammeter and speedometer grouped together on the dash; choke and gasoline petcock at the right, and the clutch and brake pedals replacing the old three-pedal system.

In this official picture, just released by the Ford Motor company, is shown the new Ford touring car.

This official picture shows the new Ford coupe. Study this picture and then compare it with the old model coupe and see how the lines have changed.

This is the sport Roadster—another of the new models that incorporates in its lines the "snap" that Fords formerly lacked. The arrow calls attention to the place where the gasoline tank is to be filled. The tank is just back of the dash.

Courtesy of MAFCA





*“A” Note from the President...*

First of all, I would like to express my disappointment at not being able to attend either of our April events. Both medical and personal obligations prevented Twila and me from enjoying the tours. We really hated to miss the tour to Buffalo, SC that included a tour of the Rose Hill Plantation and lunch at Midway BBQ. Thanks again to Tom Mack for planning this trip for our club. Hopefully, we can do a repeat trip to that area again in the future.

**For May, we have been invited by the Low Country A’s to join them, on May 13<sup>th</sup> (2<sup>nd</sup> Saturday) along with other area clubs to visit the Edisto Memorial Gardens in Orangeburg, SC.** We’ll have lunch together at **Antley’s BBQ** also in Orangeburg. The following are some facts provided by a member of the Low Country A’s. While at the Memorial Gardens viewing over 100 acres of roses, take a walk down to the Edisto River and look at the 1941 water wheel. This water wheel provided water to the gardens. It still turns to the gentle flow of the Edisto River. Today they use electric water pumps to provide water. This park is dedicated to all veterans who lost their lives defending this great nation.

I hope we have a great turnout to enjoy fun and fellowship with other clubs for this May tour. **See our club’s meeting place and time for this event on this same page.**

Let’s keep those on our prayer list in our thoughts. We hope to see them rejoin us soon! Remember as always, if your “A” is in the “repair or restore shop,” you can still be part of the fellowship in your “modern.” **So, let’s dust’um off, gas’em up, and let’s go “Model A’ing!**

*John Cockerill*



**Board of Directors**

- President\* - [John Cockerill](#) (803)446-3837
- Vice President\* - [Happy Begg](#) (803)622-0048
- Secretary\* - [Debbie Areheart](#) (803)960-6497
- Treasurer\* - [Dick Fraser](#) (803)622-7582
- Newsletter Editor\* - [Twila Cockerill](#) (803)446-5803
- Membership Director - [Cheryl Austin](#) (803)351-5687
- Past President - [Happy Begg](#) (803)622-0048
- National Director\* - [Wayne and Debbie Areheart](#) (803)960-0927

- Members At Large - [Bruce Edge](#) (803)206-4207
- [Dan Ward](#) - (864)415-5496

\*Denotes Officer of the Club

**Committee Chairs**

- Tour Director - [Cheryl and Danny Austin](#) (803)351-5687
- Technical Director [Wayne Areheart](#) (803)960-0927
- Librarian - [Davin Smith](#) (803)822-4141
- Sunshine - We need a volunteer!
- Palmetto A’s Annual Picnic - Committee
- Swap Meet - Committee
- Christmas Party - Committee
- Fundraising - [Dick Fraser](#)
- Community Outreach - [John Begg](#)
- Webmaster - [Happy Begg](#)
- Website: [www.palmettoas.net](http://www.palmettoas.net)



**13 May 2023**

**Palmetto A’s Tour**

**to Edisto Memorial Gardens in Orangeburg  
Hosted by Lowcountry A’s**

We will be meeting several other Model A Clubs at 10:00 to tour the gardens with lunch at Antley’s BBQ. **The Palmetto A’s will meet at the IGA in Gaston and depart promptly at 9 am.**

IGA

- 185 Main St N (Hwy 321), Gaston
- Edisto Memorial Gardens
- 200 Riverside Dr SW, Orangeburg
- Antley’s BBQ
- 1370 Sims St, Orangeburg





### Down the Road

Is there a destination to which you would like to drive your Model A? Is there a lunch spot to which you would like to drive your Model A? Call or email Cheryl and Danny Austin at 803-351-5687, [daustino02@sc.rr.com](mailto:daustino02@sc.rr.com). They are looking for your ideas and input!

### Palmetto A's Schedule for 2023

**May 13** – Meeting with Low Country A's and other Clubs at Edisto Memorial Gardens in Orangeburg. Lunch at Antley's BBQ Buffet

**June 16 - 17** – (Set up on the 15<sup>th</sup>) Annual Swap Meet at Smith & Jones.

**July 15** TBA

**August 19** TBA

**September 16** TBA

**October 21** TBA

**PLEASE NOTE: DATES AND PLACES ARE SUBJECT TO CHANGE!**

### Other Events of Interest

**2023**

**June 3** - Shade Tree A's 50th Anniversary Celebration. Contact Jim McPherson at 706-564-0120 for details.

**July 16-21** - [MAFCA National Tour](#) "Backroads to the Classics" in Indiana/Michigan hosted by Southeastern Tour Group

**July 30-August 4** - [MARC National Meet](#) in West Chester Township OH

**September 7 - 9** - [Charlotte Auto Fair](#)

**September 15-16** - 12th Annual Model A Days at the MAFFI Museum in Hickory Corners MI

**September 16** - International Model A Day

**October 2 - 6** - [Hershey Swap Meet and Car Show](#)



**HAPPY MAY DAY**







April 15, 2023 Club Tour



### May

#### Birthdays

- Davin Smith - 9th
- Bruce Edge - 17th
- Harold Jones - 17th
- Sandra Long - 17th
- Chuck Lyons - 27th
- Wyman Toole - 30th

#### Anniversaries

- Tom & Sherry Mack - 3rd
- Jerry & Tina Boatwright - 16th
- Byron & Corie Johnson - 17th
- Jerry & Sharon Hill - 26th

### Treasurer's Report, April, 2023

We continue to maintain a balance in line with the club budget as set and approved by the Board of Directors. All bills and receipts are processed promptly. The checkbook is balanced monthly with no discrepancies. The club account balance is reported at each General Membership meeting.

Dick Fraser, Treasurer

### Sunshine Report

Please keep the following folks in your thoughts and prayers: John Cockerill, Mack & Mary Day, Wes Porterfield and Pat Robbs.

*Remember: call, write or send a card to someone who needs encouragement. We are "FAMILY" and it helps to be thought of and prayed about.*

If you have any Sunshine concerns, please call or email the newsletter editor to add the name to our Sunshine Report.

Let's all eat a chocolate chip cookie!



## Armed Forces Day

May 20th 2023





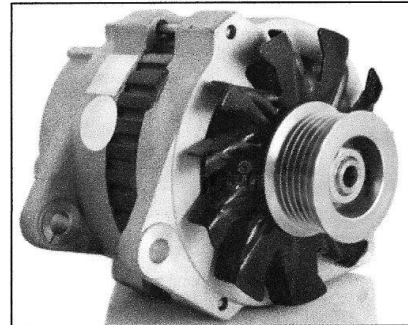
## The Alternator

by Tom Endy 2022

The automotive alternator came into being in the early 1960's, before that automobile electric power was produced by a generator. The early generators used on the Model A Ford did not have a regulator, the output was at a fixed constant rate that could be initially adjusted. In the old days people traveling across country during the day would turn on their headlights to absorb the excessive current so as not to overcharge the battery. The later generators had a regulator that mounted on the firewall and with a series of magnetic relays regulated the output of the generator so it would not overcharge the battery.

The alternator was developed after the automotive industry had changed from 6-volts to 12-volts, therefore all alternators were originally a 12-volt device and were a negative ground. Alternators produce AC power instead of DC power and require a rectifier circuit to convert the output power to DC. Along with the rectifier circuit there is a regulator circuit that is built into the alternator. Most Model A suppliers today provide alternators that are 12-volt negative ground and a 6-volt positive ground alternator to accommodate Model A's with an original 6-volt electrical system.

Many people in the Model A kingdom have an aversion to an alternator. The argument is they do not look authentic. I don't understand this thinking, the alternator on my Model A is under the hood and nobody ever sees it. An alternator was always one of the first thing I installed on any Model A I acquired.



The alternator regulator circuit is always monitoring the battery and if it requires charging it sends current to charge it. When the battery is fully charged the regulator stops sending current. The ammeter in a Model A will tell you if the battery is being charged by the alternator. When the car is started up power stored in the battery is depleted by the starter turning the engine over. For the first few miles the ammeter will show an amount of current flowing to the battery to charge it back up. When the battery reaches full charge the alternator stops sending current to the battery and the ammeter needle returns to zero and remains there. If you turn on some electrical device, such as the headlights, the regulator circuit senses it and sends additional current to the headlights. You may see an initial flicker of the ammeter needle, but it will remain on zero because the battery does not require charging.

If the ammeter needle does not return to zero after a few miles there could be several reasons. 1. The battery may be reaching the end of its serviceable life and not able to achieve a full charge. 2. The battery may be low on water. 3. There may be a corroded battery connection. The connection of the ground strap to the frame is the most notorious. It is out of sight and out of mind. It should be periodically thoroughly cleaned.

There is one negative aspect to using an alternator on a Model A. The design of Henry's electrical system is such that the alternator is always connected to the battery. The alternator contains six diodes that make up the rectifier circuit. The property of a diode allows current to flow in one direction, but not in the other. However the "other" allows a little current to sneak past and if you don't drive the car often the sneak can slowly deplete the battery. After a few weeks you could easily find the battery dead, and batteries that sit around less than fully charged don't last as long as those fully charged. It is prudent with any Model A to remove the fuse on the top of the starter when finished driving the car for the day. This way the electrical circuit, including the alternator, is disconnected from the battery. It will also prevent an electrical fire caused by a short circuit in the wiring that the fuse will not protect if the flow of current is below the rated value of the fuse.

Santa Anita A's Member, Tom Endy; Editor of the Victoria Association Newsletter (The Bustle) for the past 20 years, has created the 20+ years of the work. Some of the articles and documents have been featured in the MAFCA Restorer Magazine, other club's websites, and some are not published anywhere but here: [santaanitaas.org/tom-endys-tech-articles/](http://santaanitaas.org/tom-endys-tech-articles/). Enjoy, utilize, and learn!

### Model A Ford Technical Questions

Paul Shinn has gathered a group to help answer your technical questions about Model A's. The group includes MAFCA's current tech director and several past tech directors. You can email your questions and concerns to: [ModelATechQuestions@gmail.com](mailto:ModelATechQuestions@gmail.com)

Who knows, you may even see your question answered in *The Restorer*!

### NEED HELP WITH YOUR MODEL A?

IS YOUR PROBLEM SOMETHING THAT COULD BE ADDRESSED BY THE CLUB "TECH TEAM?" WAYNE AREHEART AND THE "TECH TEAM" ARE LOOKING FOR SMALL JOBS THAT WOULD PROVIDE A "LEARNING" TECH SITUATION FOR THE CLUB. FOR MORE INFORMATION, PLEASE CONTACT WAYNE at [dareheart@sc.rr.com](mailto:dareheart@sc.rr.com) or JOHN COCKERILL AT [johntwilac@yahoo.com](mailto:johntwilac@yahoo.com).

This is a test of your attention to detail. If you click on the word "REMEMBER" on the front page, you will be rewarded!



## Sheer Hats for Sheer Frocks

By Patti Jones

(Taken from Style Sources, April 21, 1930)

When wearing a daytime lace, georgette or any sheer type of fabric dress, a hat is an essential part of the ensemble. When selecting a hat for these types of dresses, you need to find a hat that gives a "sheer" appearance to match the texture of the main apparel. Notice the style of dresses that are shown with these hats. Any of the hats would be appropriate for this type of dress.

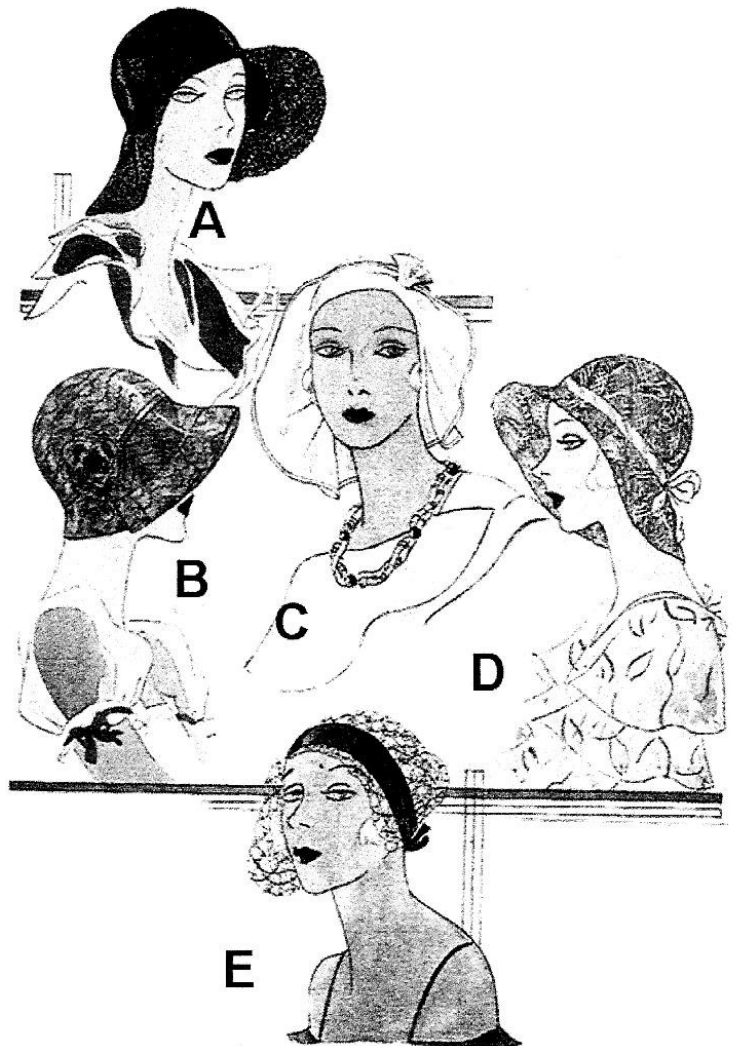
(A) This hat is described as "formal". It is made with black bakou (a form of straw weave) with black lace insets through the crown side and around the brim edge.

(B) This cloche is made with lavender hair lace and has a matching organdy facing. It is trimmed at the crown in silk ribbon and a faille flower with silver edges.

(C) This hat has a longer side brim and sits further back on the forehead. It is made of sheer pink linen hemp with matching ostrich brush stuck up at the side.

(D) This natural hair lace afternoon hat is trimmed in a turquoise pasted feather band tied in a bow at the back of the crown.

(E) This very unusual 'evening' hat came from Paris. It consists of the sheerest black hair lace dotted in chenille and trimmed in black velvet ribbon. You can tell from this example how far ahead in styles the French were.



Courtesy of MAFCA

### Breakfast Cheese Danish

#### Ingredients:

- 2 cans ready to use refrigerated crescent rolls
- 2 8-ounce packages cream cheese
- 1 cup sugar
- 1 teaspoon vanilla extract
- 1 egg
- 1 egg white

#### Glaze:

- 1/2 cup powdered sugar
- 2 tablespoons milk
- 1/2 teaspoon vanilla extract

#### Directions:

Preheat oven to 350° degrees and grease a 13X9-inch baking pan. Lay a pack of crescent rolls in the pan and pinch the openings together. Beat the cream cheese, sugar, vanilla, and egg together until smooth. Spread the mixture over the crescent rolls evenly and then lay the second pack of crescent rolls on top of the cheese mixture and brush with egg white. Bake for 35-45 minutes until the top is golden brown. Top with glaze after cooling for 20 minutes.

### Cook's Corner.....





## *The Spare Tire*

**Due date for submissions  
for the June 2023  
issue is May 20th**



CLICK HERE FOR MAFFI APPLICATION

<https://www.maffi.org/WSContent/Download/membershipapp2022.pdf>



[CLICK HERE FOR MAFCA  
MEMBERSHIP APPLICATION](#)



[CLICK HERE FOR MARC](#)

A World Magazine

A MAFCA Publication

Have you downloaded the most recent edition of A World Magazine? Click on the link, download the magazine and print! This is a great magazine with fun for all ages!

<http://www.mafca.com/downloads/Youth/A-World.pdf>

The Palmetto A's is a not for profit organization with chapter affiliations with MAFCA and MARC. The organization is dedicated to the preservation and the restoration of the Model A Ford automobile and supports membership in the national organizations dedicated to the same purpose. Palmetto A's is one of the oldest Model A Clubs in the nation, having been active for over 61 years. Monthly meetings are generally held the third Saturday of the month, time and location announced in **The Spare Tire**, the club's monthly newsletter. Palmetto A's membership dues are \$25 per year.

Members are encouraged to join the following national clubs:

Model A Ford Club of America.

Annual dues are \$50 and include a subscription to **The Restorer Magazine** from MAFCA, 250 South Cypress St., La Habra, CA 90631 and

Model 'A' Restorers Club

Annual dues are \$50 and include a subscription to the **Model 'A' News Magazine** from MARC, 6721 Merriman Road, Garden City, MI 48135

### Benefits of National Club Memberships

Membership in MAFCA includes the following:

A one year subscription to The Restorer, our award-winning bi-monthly magazine including free classified ads.

The right to register and participate in all National and Regional MAFCA meets

Voting privileges in National elections of officers and by-laws revisions

Free classified advertising on the MAFCA web site and posting of photo of your car in the Photo Album section

Technical advice to help restore your Model A and keep it in top shape

National MARC Membership Includes:

Six issues each calendar year of our award-winning, international, bi-monthly Model 'A' News magazine.

Includes detailed technical and Era fashion articles, Model A historical articles, coverage of National Meets and Region News, classified ads, and vendor ads - a great source of information for parts and services.

From 64 to 72 pages each issue. Excellent quality coated paper with color, and black and white photography.





**Pinestraw Brothers  
Lexington, SC**

Gary Areheart  
803.606.9250

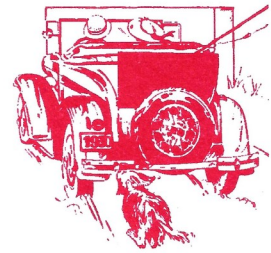
Wayne Areheart  
803.960.0927

dareheart@sc.rr.com

"ONE MILE AHEAD"  
*Smith and Jones*  
**ANTIQUE AUTO PARTS**  
SPECIALIZING IN MODEL A AND MODEL T PARTS  
60 Wisconsin St. W Columbia, SC 29170

Quality Parts • Same Day Shipping  
• Established 1972 •

Order Desk 1-800-422-1928  
1-803-822-4141 • Fax 1-803-822-8477  
All Major Credit Cards Accepted



**Davin E. Smith**

Orders: [www.snjparts.com](http://www.snjparts.com)  
Email: [snjparts@gmail.com](mailto:snjparts@gmail.com)

**Bentley's**  
Antique Auto Service, Inc.

We are a Full Service Shop, specializing in Model A Fords  
We offer Award-Winning Paint and Bodywork  
Expert Service and a Complete Machine Shop

678-407-1947 [www.mymodela.com](http://www.mymodela.com)

**Enjoy the Drive...**



803-568-5499

**The Henhouse  
Ministry**

A Non-Profit Christian Organization

**Open Wednesdays  
9am-3pm**

PO Box 203 1556 Whetstone Rd.  
Hwy #3  
Swansea, SC 29160

[thehenhouseministry@gmail.com](mailto:thehenhouseministry@gmail.com)

The World's Largest Selection of 1909-31 Ford Parts

**Snyder's**  
ANTIQUÉ AUTO PARTS

12925 Woodworth Rd. • New Springfield, OH 44443

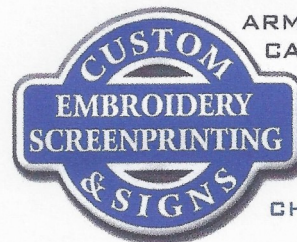
Toll Free Ordering (888) 262-5712

or FAX (888) 262-5713

Order On-Line @ [www.snydersantiqueauto.com](http://www.snydersantiqueauto.com)



**FREE Fully Illustrated CATALOG**  
\$10.00 outside the U.S., Canada, & Mexico



ARM BANDS ★ BACK PATCHES  
CAR MAGNETS ★ BANNERS  
TEES ★ POLOS  
AND MUCH MORE!

**CHRISTY SMITH**  
[CHRISTY@CUSTOMEMB.NET](mailto:CHRISTY@CUSTOMEMB.NET)

10525 GARNERS FERRY RD EASTOVER, SC

**803-695-0403**

[COMPANYCASUALS.COM/CUSTOMEMB](http://COMPANYCASUALS.COM/CUSTOMEMB)

**Pardee's**  
Refrig. & Air Conditioning Inc.  
\* Since 1937 \*

**C. R. Pardee**

1101 Miller Ave.  
Columbia, SC 29203  
(803) 779-2269

PO Box 3133  
Columbia, SC 29230  
Fax (803) 765-1558

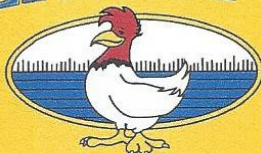
TOM MACK 1-(888) TOM-MACK



P.O. Box 327 • PROSPERITY, SC 29127  
TEL: (803) 364-3322 • FAX: (803) 364-2826  
EMAIL: [TMACK@TOMMACKCLASSICS.COM](mailto:TMACK@TOMMACKCLASSICS.COM)  
[WWW.TOMMACKCLASSICS.COM](http://WWW.TOMMACKCLASSICS.COM)

Trading in Model A's since 1974.  
Cell # 803-351-3695

**ZAXBY'S**



2320 Augusta Rd. • West Columbia • 803.739.1300  
1759 S. Lake Dr. • Lexington • 803.996.6000  
823 Hwy. 378 • Lexington • 803.785.4000

© 2015 Zaxby's Franchising, Inc. "Zaxby's" is a registered trademark of Zaxby's Franchising, Inc.

**BRATTONS ANTIQUE AUTO PARTS**



1606 BACK ACRE CIRCLE  
MOUNT AIRY, MD 21771

Order # **800 255-1929**

Web: [brattons.com](http://brattons.com)

**FREE** 194 page illustrated MODEL A parts catalog  
Catalog contains 3,200 Model A parts with full  
descriptions and Picture of each part.

Supplying Quality by using over 90% U.S. parts  
Serving the Model A restorer with parts since 1977

The Palmetto A's Model A Club, of MAFCA and MARC does not endorse or in any way approve or disapprove the use of any person or enterprise that advertises in *The Spare Tire* newsletter.