

# The Spare Tire

*Palmetto A's of South Carolina*

PO Box 8717

Columbia, South Carolina 29202

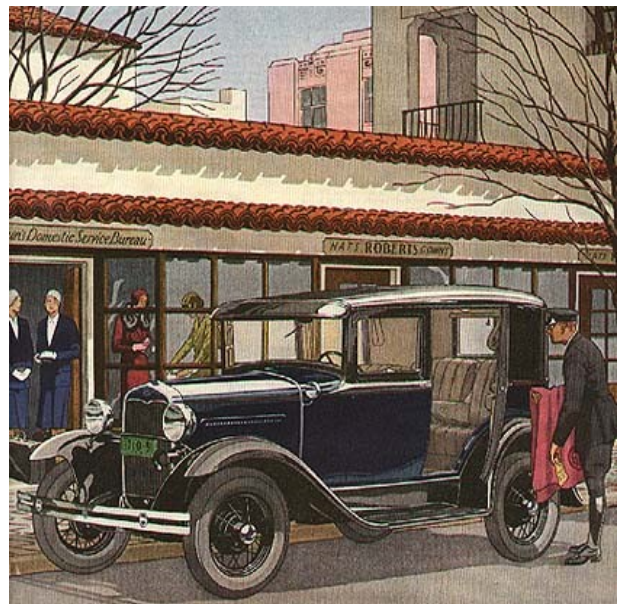
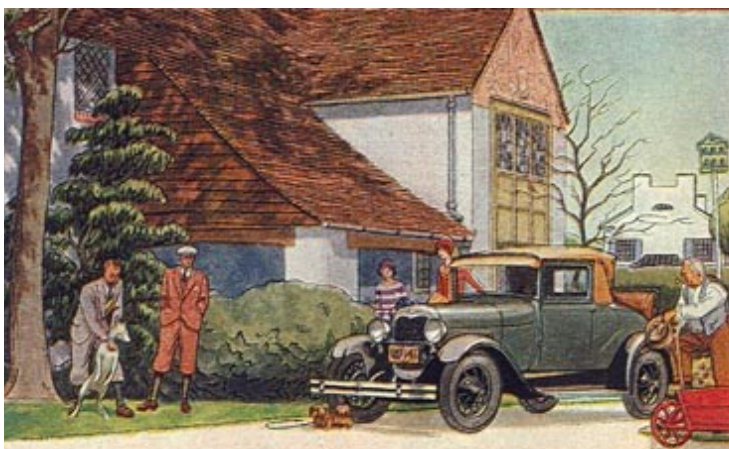
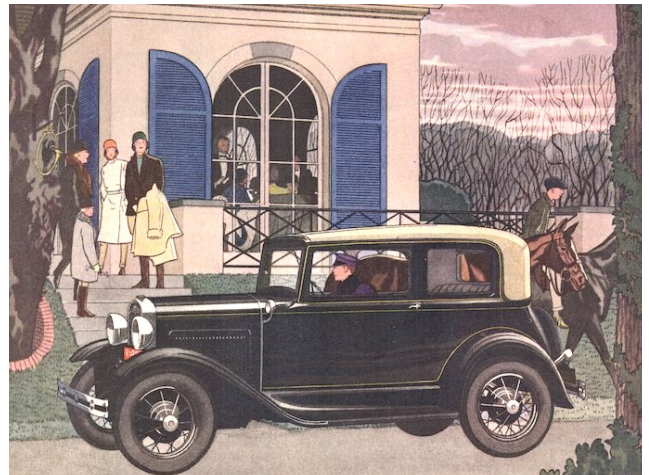
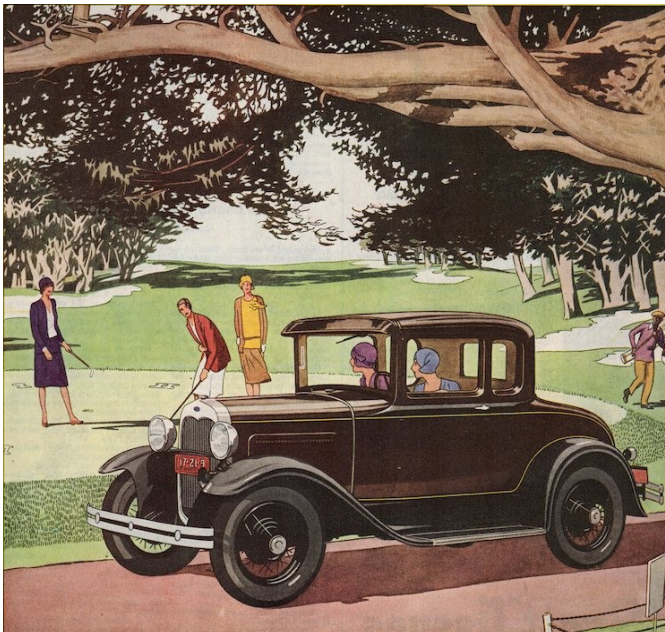
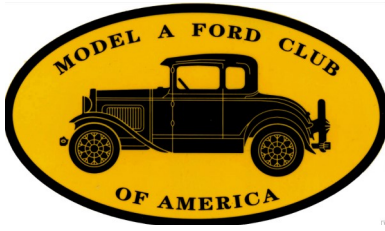
Model A Ford Club of America Chapter

Model A Restorers Club Region

Model A Ford Foundation, Inc.

Website: [www.palmettoas.net](http://www.palmettoas.net)

Facebook: [Palmetto A's of SC](https://www.facebook.com/PalmettoAsOfSC)



*"A" Note from the President...*

Our October meeting started with a "parking lot business meeting". No new nominations were presented for club officers for 2024; therefore, the existing officers will continue to serve through 2024. We then headed out for our destination, the Wagon Wheel Restaurant, Fort Lawn, SC for lunch. Not too far into our trip, we had an unplanned stop for two "roadside" tech sections. After some carburetor adjustments and a battery replacement, we were back on the road to lunch. After lunch we headed west to Prosperity to see "The Cars on the Square" and visited club members Tom and Sherry Mack at their car show room on the square. From here we headed for home after a pleasant day of enjoying driving our A's.

**For November we meet again at the Flying J / Denny's: 5901 Fairfield Rd. Columbia, SC. (Hwy. 321 & I-20) and depart at 8:30 heading to McBee, SC where we will visit McLeod Farm to see the antique museum and have lunch.**

I look forward to seeing you for a crisp fall drive enjoying our Model A's. Let's keep those members on our prayer list in our thoughts. We hope to see them rejoin us soon! Remember, as always, if your "A" is in the "repair or restore shop," you can still be part of the fellowship in your "modern." **So, let's dust'um off, gas'em up, and let's go "Model A'ing!"**

*John Cockerill*

**Board of Directors**

President\* - [John Cockerill](#) (803)446-3837  
 Vice President\* - [Happy Begg](#) (803)622-0048  
 Secretary\* - [Debbie Areheart](#) (803)960-6497  
 Treasurer\* - [Dick Fraser](#) (803)622-7582  
 Newsletter Editor\* - [Twila Cockerill](#) (803)446-5803  
 Membership Director - [Cheryl Austin](#) (803)351-5687  
 Past President - [Happy Begg](#) (803)622-0048  
 National Director\* - [Wayne and Debbie Areheart](#)  
 (803)960-0927  
 Members At Large - [Bruce Edge](#) (803)206-4207  
[Dan Ward](#) - (864)415-5496

\*Denotes Officer of the Club

**Committee Chairs**

Tour Director - [Cheryl and Danny Austin](#) (803)351-5687  
 Technical Director [Wayne Areheart](#) (803)960-0927  
 Librarian - [Davin Smith](#) (803)822-4141  
 Sunshine - We need a volunteer!  
 Palmetto A's Annual Picnic - Committee  
 Swap Meet - Committee  
 Christmas Party - Committee  
 Fundraising - [Dick Fraser](#)  
 Community Outreach - [John Begg](#)  
 Webmaster - [Happy Begg](#)  
 Website: [www.palmettoas.net](http://www.palmettoas.net)

**Sunshine Report**

Please keep the following folks in your thoughts and prayers: Pat Robbs and Starke Ward.

**Remember: call, write or send a card to someone who needs encouragement. We are "FAMILY" and it helps to be thought of and prayed about.**

If you have any Sunshine concerns, please call or email the newsletter editor to add the name to our Sunshine Report.

**Treasurer's Report, October, 2023**

We continue to maintain a balance in line with the club budget as set and approved by the Board of Directors. All bills and receipts are processed promptly. The checkbook is balanced monthly with no discrepancies. The club account balance is reported at each General Membership meeting.

Dick Fraser, Treasurer

*Veterans  
 Day  
 Honoring  
 All who  
 Served*



*Happy  
 THANKS  
 GIVING*





### Down the Road

Is there a destination to which you would like to drive your Model A? Is there a lunch spot to which you would like to drive your Model A? Call or email Cheryl and Danny Austin at 803-351-5687, [daustino02@sc.rr.com](mailto:daustino02@sc.rr.com). They are looking for your ideas and input!

### Palmetto A's Schedule for 2023

**November 18** - McCleod Farms, McBee. We will meet at the Flying J at Hwy 321 and I-20 and depart at 8:30.

**December 9** - Christmas Party at the Austin's, 246 Calcutta Drive, West Columbia. **PLEASE NOTE THE CHANGE OF VENUE**

2024

**June 14 & 15** - Palmetto A's Annual Swap Meet

**PLEASE NOTE: DATES AND PLACES ARE SUBJECT TO CHANGE!**

### Other Events of Interest

**November 3-5** - [28th Richland Creek Antique Fall Festival](#)

**November 30 - Dec 2** - MAFCA National Awards Banquet in Santa Maria, CA

2024

**April 4 -7** - [2024 MARC Membership Meet in Joliet, IL](#)

**April 19-20** - Old 96 Annual Swap Meet

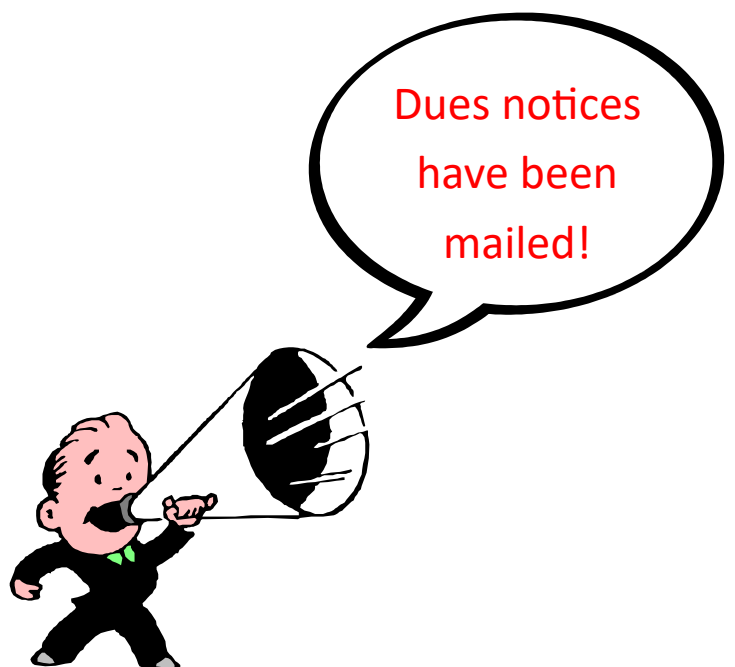
**May 21-23** - [MARC2024 National Tour in Berlin OH](#)

**June 23-29** - [MAFCA 2024 National Convention in Ruidiso, NM hosted by the Southwest Model A's](#)

2025

**June 15-22** - [MAFCA National Tour, Waynesboro, VA Hosts: Dallas Chapter](#)

**MAFCA NATIONAL AWARDS BANQUET**  
**NOVEMBER 30 - DECEMBER 1-2**  
 See Ya! in Santa Maria!



**28<sup>th</sup> RICHLAND CREEK ANTIQUE**  
*Fall Festival*  
 November 3, 4 & 5, 2023



*Palmetto A's Club Meeting Minutes.....*

The October 21, 2023 meeting was held at the Flying J and called to order by President John Cockerill at 8:50.

The purpose of this meeting was to discuss and present nominated officers for the 2024 club board. The president went over the by-law's requirements for club officers. The current board members had agreed to continue in their current positions if there were no other nominations. He then asked for nominations from the floor and there were none. He stated that neither he nor any other board members had received nominations by email or phone and, therefore, the current board members will continue to serve in their current positions for 2024. The meeting was adjourned at 8:55. Members in attendance were Danny and Cheryl Austin, Joey and Kay Austin, John and Happy Begg, Paul Bozard, John and Twila Cockerill, Bruce Edge, Calvin LeNeve and Wes Porterfield.

Submitted by Twila Cockerill for Debbie Areheart



## Jim's Tech Tips

### "Difficult Steering"

Many Model A owners find their car hard to steer when parking or maneuvering at low speed. After you confirm that there is oil in the steering gear box (not grease), the tires are all inflated to 35 psi, and everything on the front axle has been properly greased, you are left with the most likely cause: The spindle bolt (kingpin) "thrust bearings" are defective or they are not shimmed up properly to support the weight of the car. You can confirm this by using a floor jack to take some weight off of the front wheels, and then see if the steering effort is drastically reduced. If it is, the problem is the bearings.

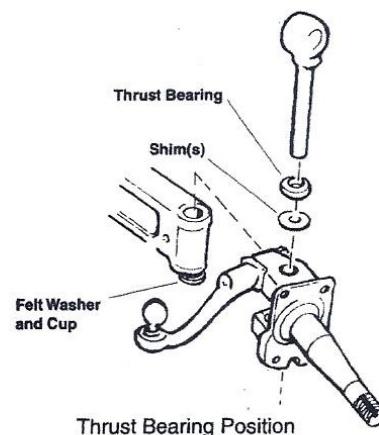
To correct this, you need to remove everything from the spindles to get to the kingpins and remove them. See Les Andrews' Red Book, starting on page 1-209, for directions. The illustration below comes from later in that section.

Clean the thrust bearing and replace it if it does not turn smoothly or shows any signs of wear. Pack the bearing with grease before reinstalling.

When reassembling, you need to test fit the spindle with the kingpin fully locked in place with the locking pin. Temporarily leave the large felt seal and metal washer off of the bottom of the spindle for this. Start with the number of shims previously used, then add 1 shim at a time until very little or no vertical movement of the spindle is felt on the kingpin. It can take up to 4 shims to compensate for wear.

At some point, adding a shim may jam up the spindle, making it hard to turn on the kingpin. If it does, take that last shim out, reassemble, and confirm that the spindle again moves easily, as it should. Now reassemble the spindle on the axle with the felt seal and the cupped metal washer installed between the axle and the bottom part of the spindle (the metal cup touches the axle, the felt touches the spindle). The added thickness of the felt seal may temporarily make the spindle a bit stiff turning on the kingpin, but it will quickly flatten out and move smoothly when you drive.

Now reinstall everything that attaches to the spindle, install the brakes, maybe use this as an opportunity to clean and repack the wheel bearings, then install the drums and the wheels. Grease all of the fittings well. Go for a test drive, enjoy the easier steering, and *Have a Model A Day!*



Jim

Courtesy of MAFCA

### Model A Ford Technical Questions

Paul Shinn has gathered a group to help answer your technical questions about Model A's. The group includes MAFCA's current tech director and several past tech directors. You can email your questions and concerns to: [ModelATechQuestions@gmail.com](mailto:ModelATechQuestions@gmail.com)

Who knows, you may even see your question answered in *The Restorer!*

### NEED HELP WITH YOUR MODEL A?

IS YOUR PROBLEM SOMETHING THAT COULD BE ADDRESSED BY THE CLUB "TECH TEAM?" WAYNE AREHEART AND THE "TECH TEAM" ARE LOOKING FOR SMALL JOBS THAT WOULD PROVIDE A "LEARNING" TECH SITUATION FOR THE CLUB. FOR MORE INFORMATION, PLEASE CONTACT WAYNE at [dareheart@sc.rr.com](mailto:dareheart@sc.rr.com) or JOHN COCKERILL AT [johntwilac@yahoo.com](mailto:johntwilac@yahoo.com).

### *Just a reminder!!*

The club has a library of Model A Technical DVDs for your use.

Contact John Cockerill at 803-446-3837 (cell) or at [johntwilac@yahoo.com](mailto:johntwilac@yahoo.com).



## Gifts for Him and Her

By Patti Jones

(From Montgomery Wards Catalog, winter 1931)

### Gifts for Him

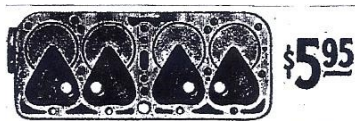
What would, us ladies buy as a gift for the "man in our life"? Car parts!! Yes, many of the guys, today, would love to have some of these accessories that were advertised in the Montgomery Wards catalog.

(A) This is a high compression cylinder head; also known by the guys as a "police head, that law enforcement agencies put on the Model A's for speed. It would give a Model A 5.9 to 1 compression ratio to a stock Model A head. (They understand all that stuff)

(B) These are two examples of accessory heat and oil pressure gauges mounted under the dash of your Model A.

(C) This is an accessory starter pedal, so your "man" doesn't have to stretch his leg to reach the starter button.

(D) Many guys would love to have this emergency brake extension lever so they don't have to reach a long way when releasing and setting the parking brake. Many of these 1931 gifts were priced from \$.89-\$5.95...right now a "police head" advertised in The Restorer was \$225.00!



\$5.95

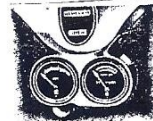
#### More Speed—Power—Pick-Up For Fords, Models A-AA

A high compression Cylinder Head similar in construction to those supplied by the Ford Motor Co., for Police and Highway Patrol Cars.

You will be able to out-perform other cars like yours on the highway. You will thrill at the extra surge of power and speed. Installation is easy with Cylinder Head Gasket and instructions furnished. Not Prepaid. Ship. wt. 40 lbs.

461 C 2500 ..... \$5.95

(A)



89¢

For Models A-AA Fords

#### Heat Indicator and Oil Pressure Gauge For A-AA Fords

Two needed instruments in one unit. Motor temperature registers on one dial; oil pressure shows on other—one glance only is needed. Easily installed—held by screws in panel. Postpaid.

Fits cars with plain or ribbed panels..... \$4.25

61 C 3602..... \$4.25

(B)



#### Dash Mounting Oil Gauges

Tell whether your motor is being lubricated! All have harmonious nickel finish cases; are easily installed with instructions; held by screws already in panel. Ship. wt., each, 1 lb. 4 oz.

61 C 2504—De Luxe Model as used on finest cars. For Models A-AA Fords..... 98¢

61 C 2516—Standard Model Gauge. For Models A-AA Fords with plain or ribbed panels..... 89¢



#### Starter Pedal For Fords A-AA

42¢

Puts Starter pedal within easy reach and increases leverage so that little effort is required to start. Pressed steel, nickel-plated. Ship. wt. 3 oz. 61 C 2510..... 42¢

(C)



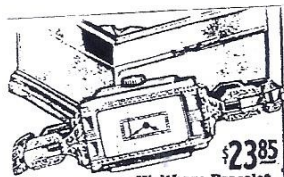
#### For Fords A and AA Brake Lever Extension 98¢

Brings emergency brake within easy reach. A slight pressure releases it. Quickly installed—no drilling. Black enamel and nickel. 61 C 2536—Ship. wt. 1 lb. 98¢

(D)

### Gifts for Her

It is very easy for our gentlemen to please us Model A ladies. We'd love a new Waltham bracelet watch in white gold (A), or (B) A new compact with lipstick in like these 2 styles. Diamonds are a "girl's best friend", and we'd surely love either of these two ring selections set in platinum (C), and lastly (D) any of the enameled mesh bags could certainly win our love.



Waltham Bracelet Watch in Enameled Jewel Box

\$2.385

(A)



Compact With Lipstick Striking enamel design on top. Non-tarnishing finish on back and chain. 2 1/2 in. in diameter, chain 5/8 in. long. 545 C 6862—Black and red. 546 C 6863—Black and green. Each Postpaid..... \$2.19

(B)



Compact With Lipstick Decorated with basket in green enamel; genuine Sycamore. 2 1/2 in. square. 545 C 6897—French blue. 546 C 6898—Red. 546 C 6899—Black. Each Postpaid..... \$3.98



Exclusive Design \$3.650

Modernistic Effect \$7.950

(C)



#### New Enameled Mesh Bags

Artistic Design for the "Young Miss" \$2.00

Smart in Its Simplicity \$2.69

Very Charming \$4.45

(D)

Courtesy of MAFCA

## Cook's Corner.....

### Pumpkin Pie Dessert Bars

#### Ingredients:

- 1 - 15 ounce can solid pack pumpkin puree
- 1 - 12 ounce can evaporated milk
- 3 eggs
- 1 cup sugar
- 1 tablespoon pumpkin pie spice
- 1 - 18¾ package yellow or spice cake mix
- ½ cup coarsely chopped pecan or walnuts
- ¾ cup melted butter

#### Instructions:

Preheat oven to 350°. Grease a 9x13 baking pan. In a mixing bowl, combine the pumpkin puree, evaporated milk, eggs, sugar and pumpkin pie spice and mix well. Pour into the prepared pan. Sprinkle the first DRY cake mix and then the chopped nuts over the pumpkin puree mixture. Then drizzle all over with the melted butter. Use a butter knife to make a swirly pattern on the cake. Bake for 50-60 minutes or until tester inserted near the center comes out clean.

## *The Spare Tire*

**Due date for submissions  
for December 2023  
issue is November 20th**



CLICK HERE FOR MAFFI APPLICATION

<https://www.maffi.org/WSContent/Download/membershipapp2022.pdf>

A World Magazine

A MAFCA Publication

Have you downloaded the most recent edition of A World Magazine? Click on the link, download the magazine and print! This is a great magazine with fun for all ages!

<http://www.mafca.com/downloads/Youth/A-World.pdf>

The Palmetto A's is a not for profit organization with chapter affiliations with MAFCA and MARC. The organization is dedicated to the preservation and the restoration of the Model A Ford automobile and supports membership in the national organizations dedicated to the same purpose. Palmetto A's is one of the oldest Model A Clubs in the nation, having been active for over 62 years. Monthly meetings are generally held the third Saturday of the month, time and location announced in **The Spare Tire**, the club's monthly newsletter. Palmetto A's membership dues are \$25 per year.

Members are encouraged to join the following national clubs:

Model A Ford Club of America.

Annual dues are \$50 and include a subscription to **The Restorer Magazine** from MAFCA, 250 South Cypress St., La Habra, CA 90631 and

Model 'A' Restorers Club

Annual dues are \$50 and include a subscription to the **Model 'A' News Magazine** from MARC, 6721 Merriman Road, Garden City, MI 48135



[CLICK HERE FOR MAFCA  
MEMBERSHIP APPLICATION](#)



[CLICK HERE FOR MARC](#)

### Benefits of National Club Memberships

Membership in MAFCA includes the following:

A one year subscription to The Restorer, our award-winning bi-monthly magazine including free classified ads.

The right to register and participate in all National and Regional MAFCA meets

Voting privileges in National elections of officers and by-laws revisions

Free classified advertising on the MAFCA web site and posting of photo of your car in the Photo Album section

Technical advice to help restore your Model A and keep it in top shape

National MARC Membership Includes:

Six issues each calendar year of our award-winning, international, bi-monthly Model 'A' News magazine.

Includes detailed technical and Era fashion articles, Model A historical articles, coverage of National Meets and Region News, classified ads, and vendor ads - a great source of information for parts and services.

From 64 to 72 pages each issue. Excellent quality coated paper with color, and black and white photography.





**Pinestraw Brothers**  
Lexington, SC

Gary Areheart  
803.606.9250

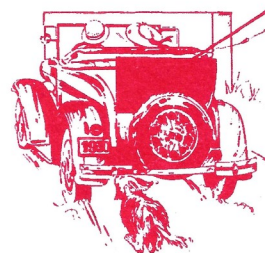
Wayne Areheart  
803.960.0927

dareheart@sc.rr.com

"ONE MILE AHEAD"  
*Smith and Jones*  
**ANTIQUE AUTO PARTS**  
SPECIALIZING IN MODEL A AND MODEL T PARTS  
60 Wisconsin St. W Columbia, SC 29170

Quality Parts • Same Day Shipping  
• Established 1972 •

Order Desk 1-800-422-1928  
1-803-822-4141 • Fax 1-803-822-8477  
All Major Credit Cards Accepted



**Davin E. Smith**

Orders: [www.snjparts.com](http://www.snjparts.com)  
Email: [snjparts@gmail.com](mailto:snjparts@gmail.com)

**Bentley's**  
Antique Auto Service, Inc.

We are a Full Service Shop, specializing in Model A Fords  
We offer Award-Winning Paint and Bodywork  
Expert Service and a Complete Machine Shop

678-407-1947 [www.mymodela.com](http://www.mymodela.com)

**Enjoy the Drive...**



803-568-5499

**The Henhouse Ministry**

A Non-Profit Christian Organization

**Open Wednesdays**  
**9am-3pm**

PO Box 203 1556 Whetstone Rd.  
Hwy #3  
Swansea, SC 29160

[thehenhouseministry@gmail.com](mailto:thehenhouseministry@gmail.com)

The World's Largest Selection of 1909-31 Ford Parts

**Snyder's**  
ANTIQUÉ AUTO PARTS

12925 Woodworth Rd. • New Springfield, OH 44443

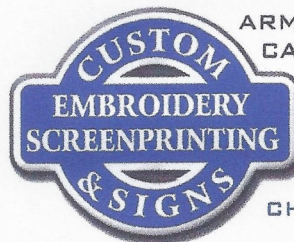
Toll Free Ordering (888) 262-5712

or FAX (888) 262-5713

Order On-Line @ [www.snydersantiqueauto.com](http://www.snydersantiqueauto.com)



**FREE Fully Illustrated CATALOG**  
\$10.00 outside the U.S., Canada, & Mexico



ARM BANDS ★ BACK PATCHES  
CAR MAGNETS ★ BANNERS  
TEES ★ POLOS  
AND MUCH MORE!

**CHRISTY SMITH**

[CHRISTY@CUSTOMEMB.NET](mailto:CHRISTY@CUSTOMEMB.NET)

10525 GARNERS FERRY RD EASTOVER, SC

**803-695-0403**

[COMPANYCASUALS.COM/CUSTOMEMB](http://COMPANYCASUALS.COM/CUSTOMEMB)

**Pardee's**  
Refrig. & Air Conditioning Inc.  
\* Since 1937 \*

**C. R. Pardee**

1101 Miller Ave.  
Columbia, SC 29203  
(803) 779-2269

PO Box 3133  
Columbia, SC 29230  
Fax (803) 765-1558

TOM MACK 1-(888) TOM-MACK



P.O. Box 327 • PROSPERITY, SC 29127  
TEL: (803) 364-3322 • FAX: (803) 364-2826  
EMAIL: [TMACK@TOMMACKCLASSICS.COM](mailto:TMACK@TOMMACKCLASSICS.COM)  
[WWW.TOMMACKCLASSICS.COM](http://WWW.TOMMACKCLASSICS.COM)

Trading in Model A's since 1974.  
Cell # 803-351-3695

**ZAXBY'S**



2320 AUGUSTA RD • WEST COLUMBIA, SC • (803) 739-1300  
1759 S LAKE DR • LEXINGTON, SC • (803)996-6000  
823 HWY 378 • LEXINGTON, SC • (803) 785 4000  
649 COLUMBIA AVE • CHAPIN, SC • (803)575-8006

**BRATTONS ANTIQUE AUTO PARTS**



1606 BACK ACRE CIRCLE  
MOUNT AIRY, MD 21771

Order # **800 255-1929**

Web: [brattons.com](http://brattons.com)

**FREE** 194 page illustrated MODEL A parts catalog  
Catalog contains 3,200 Model A parts with full  
descriptions and Picture of each part.

Supplying Quality by using over 90% U.S. parts  
Serving the Model A restorer with parts since 1977

The Palmetto A's Model A Club, of MAFCA and MARC does not endorse or in any way approve or disapprove the use of any person or enterprise that advertises in *The Spare Tire* newsletter.